



Model: _____ Item #: _____ Date: _____

Project: _____ Qty: _____ Approved By: _____

Storage Cabinets with Dump Sinks

Royal Series Underbar



KR24-SD12C



KR24-S18C

Standard Features

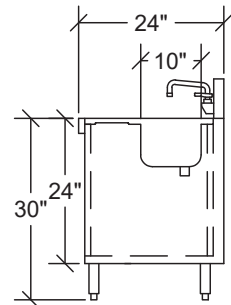
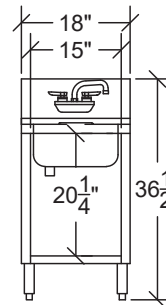
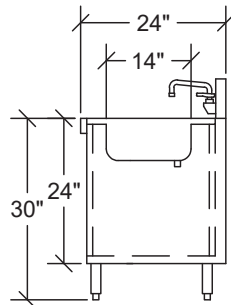
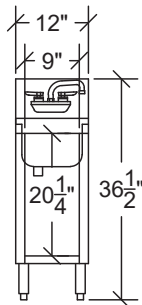
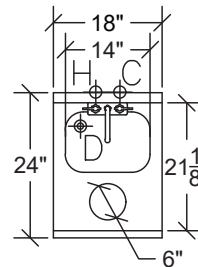
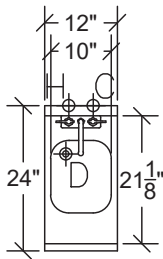
- Cabinet below to store chemicals and cleaning products
- Open access in rear for plumbing
- KR24-S18C and KR24-SD18C includes trash chute
- Includes Dump Sink with Royal Series Faucet

Specifications

- | | |
|-------------------|---|
| Material | ▪ 20 Gauge stainless steel |
| | ▪ Legs: 16 Gauge Stainless Steel |
| Plumbing | ▪ Faucet (model 14-406L): Royal Series 4" Center Wall Mount Faucet with 1.8 GPM aerator |
| | ▪ 1-1/2" Hot & Cold Water |
| | ▪ 1" IPS drain connection |
| Backsplash | ▪ 6-1/2" high, 1-1/2" deep |
| Legs | ▪ 1-5/8" tubular legs with grey plastic bullet foot |
| Dump Sink | ▪ 20 gauge stainless steel w/ 1" center drain |
| | ▪ 7" deep bowl |

Model	Overall Length	Depth	Doors	Bowl Size	Wgt. (lbs)
KR24-S12C	12"	24"	No	10" x 14" x 7"	50
KR24-SD12C	12"	24"	Yes (1)	10" x 14" x 7"	60

Model	Overall Length	Depth	Doors	Bowl Size	Wgt. (lbs)
KR24-S18C	18"	24"	No	14" x 10" x 7"	65
KR24-SD18C	18"	24"	Yes (1)	14" x 10" x 7"	75



Warning: This product can expose you to chemicals including lead and lead compounds which are known to the State of California to cause cancer and birth defects or other reproductive harm. For more information go to www.P65Warnings.ca.gov.

