

# SEALED WELL ELECTRIC TABLES WITH ENCLOSED BASE AND DOORS



**SW-5E-240-DR**



Sealed Well with Drain

Item #: \_\_\_\_\_ Qty #: \_\_\_\_\_  
Model #: \_\_\_\_\_  
Project #: \_\_\_\_\_



**Optional TA-255P  
Casters Available**

## FEATURES:

Stainless steel undershelf  
Fiberglass insulation between each compartment  
Drains with gate valves per well for use with water  
Stainless steel 8" support shelf with removable  
3/8" thick poly cutting board - Ships K.D.

## MATERIAL:

**TOP:** 20 gauge #302 stainless steel with die stamped pan openings. (11.875" x 20.062")  
**BODY:** 22 gauge #430 stainless steel  
**BASE:** 18 gauge stainless steel with fully adjustable stainless steel bullet foot  
**UNDERSHELF:** 22 gauge #430 stainless steel  
**LINERS:** 20 Gauge stainless steel deep drawn with drain  
**CUTTING BOARD:** White Thermoplastic  
**CUTTING BOARD BRACKETS:** 16 gauge, #302 stainless steel

## ELECTRICAL:

120V units yield 640 Watts  
208V/240V dual voltage units yield 825 Watts at 208V and 1100 Watts at 240V  
6' electrical cord with plug  
Infinite control knobs  
Indicator lights



| Model #      | Length        | Width*  | # of Wells | Volts   | True Amps/<br>Watts Per Unit | NEMA Plug | Wt.      | Cu. Ft. |
|--------------|---------------|---------|------------|---------|------------------------------|-----------|----------|---------|
| SW-2E-120-DR | A = 31-13/16" | 30-5/8" | 2          | 120     | 10.67/1280                   | 5-20P     | 127 lbs. | 28      |
| SW-3E-120-DR | B = 47-1/8"   | 30-5/8" | 3          | 120     | 16/1920                      | 5-20P     | 155 lbs. | 41      |
| SW-4E-120-DR | C = 62-7/16"  | 30-5/8" | 4          | 120     | 21.33/2560                   | L5-30P    | 197 lbs. | 54.55   |
| SW-2E-240-DR | A = 31-13/16" | 30-5/8" | 2          | 208/240 | 9.17/2200                    | 6-20P     | 127 lbs. | 28      |
| SW-3E-240-DR | B = 47-1/8"   | 30-5/8" | 3          | 208/240 | 13.75/3300                   | 6-20P     | 155 lbs. | 41      |
| SW-4E-240-DR | C = 62-7/16"  | 30-5/8" | 4          | 208/240 | 18.33/4400                   | L6-30P    | 197 lbs. | 54.55   |
| SW-5E-240-DR | D = 77-3/4"   | 30-5/8" | 5          | 208/240 | 22.92/5500                   | L6-30P    | 215 lbs. | 66.94   |

**\*Width Includes 8" Cutting Board**

**NOTE:** Units are not designed to cook or heat frozen or refrigerated foods. Food placed in tables should already be hot, and the table will maintain the proper temperatures

**NEMA PLUGS: Your plug will look like this...**



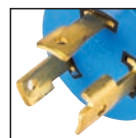
NEMA 5-20P



NEMA 6-20P



NEMA L5-30P



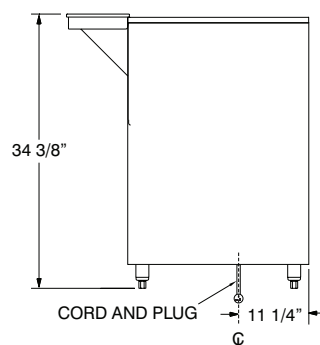
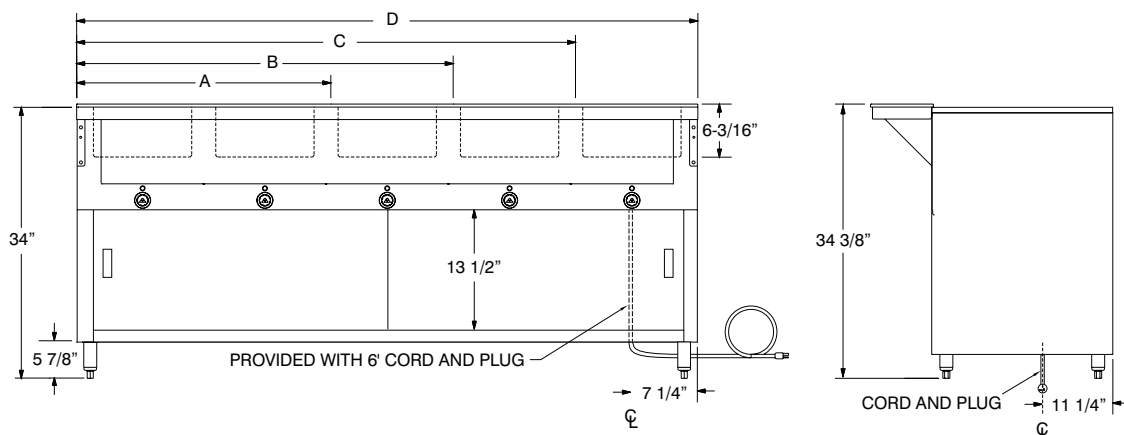
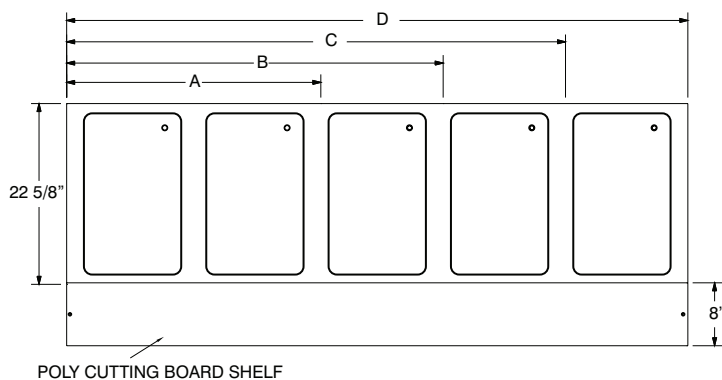
NEMA L6-30P

**NOTE:** For international applications, plug may need to be replaced (by others) in field.

# DIMENSIONS and SPECIFICATIONS

TOL ± .125"

ALL DIMENSIONS ARE TYPICAL



Acrylic Food Shield has 10" Clearance from Deck

## Double Sided Self-Serve Buffet Shelf with Built-In Food Shield

| Model | Length    | Approx Wt. | Cu. Ft. |
|-------|-----------|------------|---------|
| TBS-2 | 31-13/16" | 34 lbs.    | 2       |
| TBS-3 | 47-1/8"   | 42 lbs.    | 3       |
| TBS-4 | 62-7/16"  | 47 lbs.    | 4       |
| TBS-5 | 77-3/4"   | 55 lbs.    | 4       |



## Acrylic Side Panels for Buffet Shelf

Add side panels to meet additional NSF requirements (2 panels per end)

TBP-1 One end  
TBP-2 Two Ends

Field Installation Available

## Food Table Accessories

Visit our website for additional Food Table Accessories

## SEALED WELL REPLACEMENT PARTS

- T Thermostatic Control (Per Well)
- M Manifold Drains (Per Well)



Manifold Drain Shown (-M)

**TA-255P** Add Casters to Enclosed Base Food Units  
(Includes 4 -5" Swivel Casters, 2 w/ Brakes)

**TA-255P** Add Casters to Enclosed Base Food Units  
(Includes 4 -5" Swivel Casters, 2 w/ Brakes)

**SU-45A** 12" x 1" Adapter Bar

**SU-45B** 20" x 3" Adapter Bar

**K-49** Filler Faucet for Hot Tables (Hot water supply only. Requires -M Manifold Drain & SU-15 Prepare for Filler Faucet Provision)

**SU-15** Prepare Hot food Table For Filler Faucet (For Gas Units. Excludes Wetbath Units)



REF-V

200 Heartland Boulevard, Edgewood, NY 11717-8380

ADVANCE TABCO is constantly engaged in a program of improving our products. Therefore, we reserve the right to change specifications without prior notice.

ADVANCE TABCO, JANUARY 2019