

Item #: _____ Qty #: _____
Model #: _____
Project #: _____



15A - 120V Duplex
Receptacle Hidden
Beneath Blender Shelf



PRU-19-60R Shown

FEATURES:

9 1/2" x 11 1/2" x 6" dump sink.
30" x 11" insulated ice bin; 89 lbs. ice capacity.
30" speed rail.
1 3/4" return with soda gun knock-out.
Recessed drainboard with removable perforated top for glassware.
Recessed blender station with 15A - 120V duplex outlet hidden beneath shelf.
Includes two removable plastic bottle racks.
K-59 splash mount gooseneck faucet.
Stainless steel top, apron, sides and legs with 1" adjustable stainless steel bullet feet
Adjustable stainless steel side cross-bracing
7" backsplash.

MECHANICAL:

Includes 4" O.C. splash mount gooseneck spout faucet*.

Faucet meet federal lead free standards.

1" IPS drain (non-cold plate ice bin and glassware shelf).

1/2" IPS drain (cold plate ice bin).

3 1/2" basket drain (sink bowl).

MATERIAL:

20 gauge, 300 stainless steel

Recessed Glassware Shelf: 18 gauge, 300 stainless steel

Legs: 1 5/8" O.D. 18 gauge, stainless steel with adjustable plastic bullet feet

Ice Bin Insulation: 2 lbs. density foam-in-place

Cold Plate: Cast aluminum with 10 circuits (8 syrup and 2 water lines) with 5/16" diameter stainless steel bump and swedge ends.

OPTIONAL:

K-316-LU - Add wrist handles

SU-73 - Add mirror finish (factory installed only)

25" WIDE		O.A. Size W x L x H	Approx. Weight	Approx. Cu. Ft.	30" WIDE		O.A. Size W x L x H	Approx. Weight	Approx. Cu. Ft.	Ice Bin Capacity
Model #					Model #					
PRU-19-48L or R		25" x 48" x 36"	105 lbs.	27	PRU-24-48L or R		30" x 48" x 36"	110 lbs.	35	89 lbs.
PRU-19-60L or R		25" x 60" x 36"	130 lbs.	28	PRU-24-60L or R		30" x 60" x 36"	135 lbs.	35	89 lbs.
With 10-Circuit Cold Plate										
PRU-19-48L-10 or R-10		25" x 48" x 36"	140 lbs.	37	PRU-24-48L-10 or R-10		30" x 48" x 36"	145 lbs.	46	89 lbs.
PRU-19-60L-10 or R-10		25" x 60" x 36"	165 lbs.	37	PRU-24-60L-10 or R-10		30" x 60" x 36"	170 lbs.	46	89 lbs.

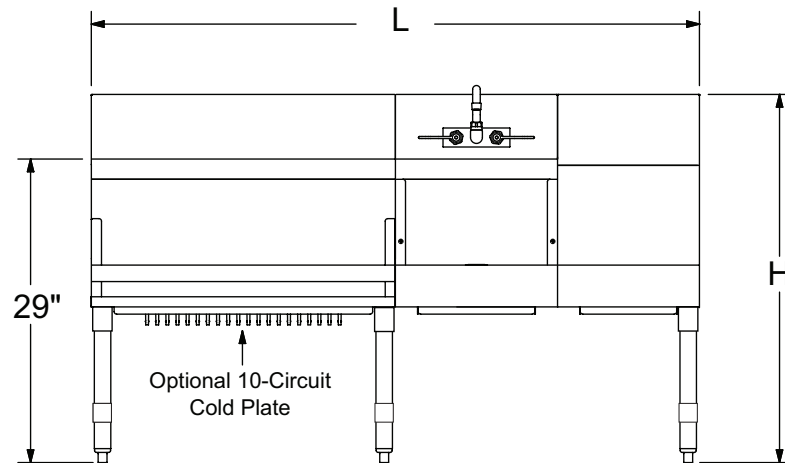
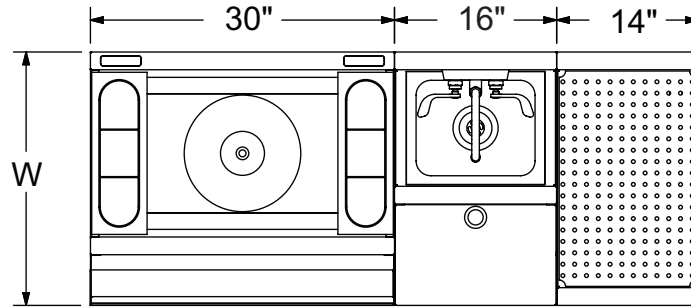
L and R Indicate Ice Bin Location.

DIMENSIONS and SPECIFICATIONS

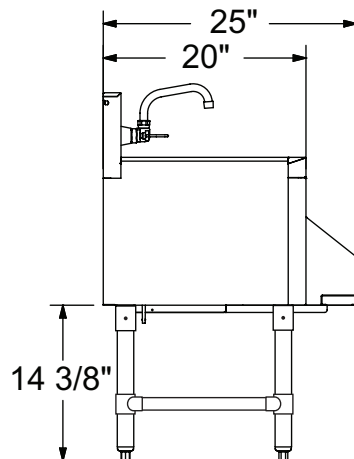
TOL Overall: $\pm .500"$ Interior: $\pm .250"$

ALL DIMENSIONS ARE TYPICAL

-L Model Shown



PRU-19 Series



PRU-24 Series

