

15" Wide WALL CABINETS



Item #: _____ Qty #: _____

Model #: _____

Project #: _____



SLIDING DOORS
WCS Series



OPEN
WCO Series



HINGE DOORS
WCH Series

THREE AVAILABLE OPTIONS!

WCS Series

L	Sliding Door Unit	# of Doors	Wt.	Cu.
36"	NOT AVAILABLE			
48"	WCS-15-48	2	155 lbs.	21
60"	WCS-15-60	2	185 lbs.	26
72"	WCS-15-72	2	220 lbs.	31
96"	WCS-15-96	4	295 lbs.	41

WCO Series

L	Open Door Unit	Wt.	Cu.
36"	WCO-15-36	95 lbs.	17
48"	WCO-15-48	120 lbs.	21
60"	WCO-15-60	145 lbs.	26
72"	WCO-15-72	180 lbs.	31
96"	WCO-15-96	240 lbs.	41

WCH Series

L	Hinged Door Unit	# of Doors	Wt.	Cu.
36"	WCH-15-36	2	120 lbs.	17
48"	WCH-15-48	2	150 lbs.	21
60"	WCH-15-60	2	180 lbs.	26
72"	WCH-15-72	4	240 lbs.	31
96"	WCH-15-96	4	320 lbs.	41

FEATURES:

Wall hung cabinet with intermediate fixed shelf.
Sloping Top enhances sanitary configuration.

CONSTRUCTION:

All TIG welded using the TIG process.
Welded seams finished to match adjacent surfaces.
Unit polished to a satin finish.

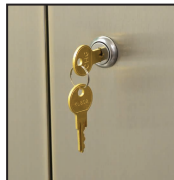
MATERIAL:

18 gauge type 430 series stainless steel.

WCH Series: Stainless steel hinges

WCH/WCS Series: Plastic handles.

Mounting hardware is not supplied.



Optional Door Lock

TA-46

One lock for each pair of sliding doors
or each individual hinged door



Additional Mid-Shelf

WC-SHELF

One fixed mid-shelf is standard



Hinge Repair Kit

TA-36D

Repair Kit for Door Hinge (Per Hinge)

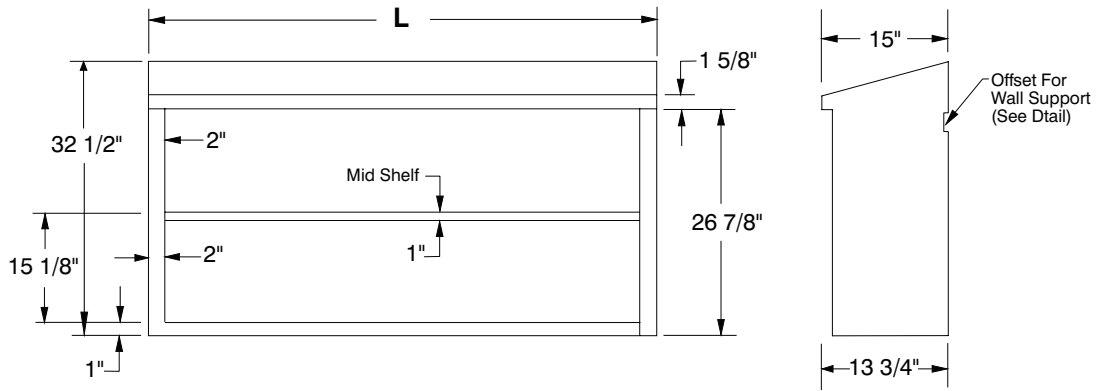
DETAILS and SPECIFICATIONS

TOL ± .500"

ALL DIMENSIONS ARE TYPICAL

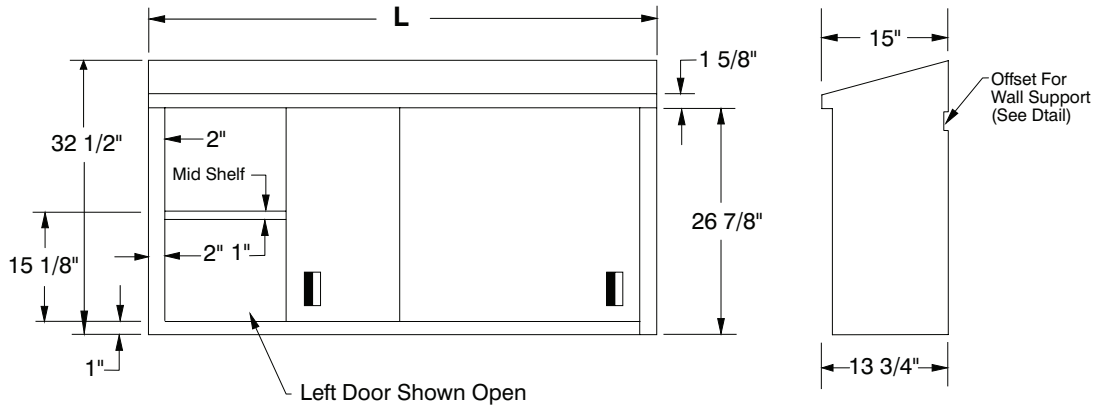
WCO-Series

Open Style



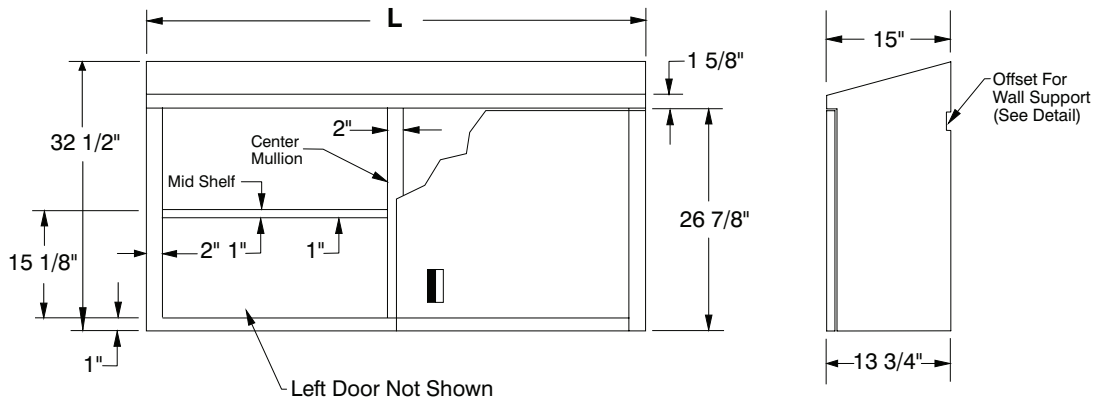
WCS-Series

Sliding Door Style



WCH-Series

Hinged Door Style



OFFSET DETAIL

