



*The Signature of Quality*

## FEDERAL INDUSTRIES

A Standex Company

215 Federal Avenue  
Belleville, Wisconsin 53508-9201

**Phone:** 800-356-4206

**Fax:** 608-424-3234

**Email:** Geninfo@Federalind.com

**Website:** Federalind.com

Project Name: \_\_\_\_\_

Item #: \_\_\_\_\_

Model #: \_\_\_\_\_ Qty: \_\_\_\_\_

Approval: \_\_\_\_\_

AIA #

SIS #

## VISION SERIES - High Profile Self-Serve Refrigerated Merchandiser - 78"

Designed with impulse sales in mind. Get maximum return from an attention-grabbing merchandiser and increase profits.



Model VRSS4878S Shown

MODEL	DIMENSIONS (Includes End Panels)
<input type="checkbox"/> VRSS3678S	36 x 33 x 78 (in) 914 x 838 x 1981 (mm)
<input type="checkbox"/> VRSS4878S	47.25 x 33 x 78 (in) 1200 x 838 x 1981 (mm)
<input type="checkbox"/> VRSS6078S	59.25 x 33 x 78 (in) 1505 x 838 x 1981 (mm)
<input type="checkbox"/> VRSS7278S	71.25 x 33 x 78 (in) 1810 x 838 x 1981 (mm)

## STANDARD FEATURES

### Model Features

- Welded powder coated steel base fabrication
- Choice of six standard laminates on exterior
- Black powder coated metal front & rear grill
- Black Trim
- Stainless steel display deck
- Glass ends or solid black ends
- Black interior back panel
- Moisture resistant end panel construction
- Front air intake / front & rear discharge
- Energy saving night curtain
- Adjustable Leg Levelers
- Cord & Plug

### Refrigeration

- Electronic temperature control with on demand defrost
- Refrigeration controls maintain 38°-40°F (3.3°-4.4°C) Note: Case temperature will vary if the air curtain is disrupted.
- Thermometer
- R449a refrigerant

### Shelving

- Four tiers of adjustable black metal shelves with black price tag molding. Shelves can be flat or slanted downwards at 10°

### Lighting

- 3500K LED top light

### Agency Approvals

- UL, C-UL and UL Sanitation listed to NSF-7, Type II conditions
- DOE 2017 compliant

## OPTIONAL ACCESSORIES

- |   |   |
|---|---|
| <input type="checkbox"/> Special External Laminate Finish               | <input type="checkbox"/> LED Lights Below Shelves   |
| <input type="checkbox"/> White Interior (Including Shelving)            | <input type="checkbox"/> 2 1/2" recessed (63.5mm) or 4" (101.6mm) Casters (Self Contained Models Only)                      |
| <input type="checkbox"/> Stainless Steel Interior (Including Shelves)   | <input type="checkbox"/> Legs, 6", (152mm)  |
| <input type="checkbox"/> Stainless Steel Exterior Finish                | <input type="checkbox"/> Skirt with Casters or Legs   |
| <input type="checkbox"/> Reflective End Glass                           | <input type="checkbox"/> Joining Kit for Continuous Line-Ups  |
| <input type="checkbox"/> Deli Meat Pegs                                 | <input type="checkbox"/> Condensate Evaporator Assembly (Field Install) (Separate 120V, 20A Circuit Required) (Remote Only) |
| <input type="checkbox"/> Sliding Rear Access Doors (Hinged on 36" case) | <input type="checkbox"/> Remote Refrigeration With Condensate Pump (R449a Refrigerant, EEV Included)                        |
| <input type="checkbox"/> Roll-up Security Cover (Square End Profile)    | <input type="checkbox"/> Front Cart Bumper  |
| <input type="checkbox"/> Removable Security Cover                       | <input type="checkbox"/> Reversing Condenser Coil Fan   |
| <input type="checkbox"/> Solid Right/Left End Panels (mirrored)         | <input type="checkbox"/> Additional Lighted (LED) Shelf   |

\*Additional options available on the website and price list.



**WARRANTY\***  
One year Parts and Labor  
2nd thru 5th year part only  
service compressor  
(U.S.A. and Canada)




**Note: Information is subject to change at any time. Visit [www.federalind.com](http://www.federalind.com) for the most current specs.**

AIA #	<b>VISION SERIES - High Profile Self-Serve Refrigerated Merchandiser - 78"</b>
SIS #	Product Specifications

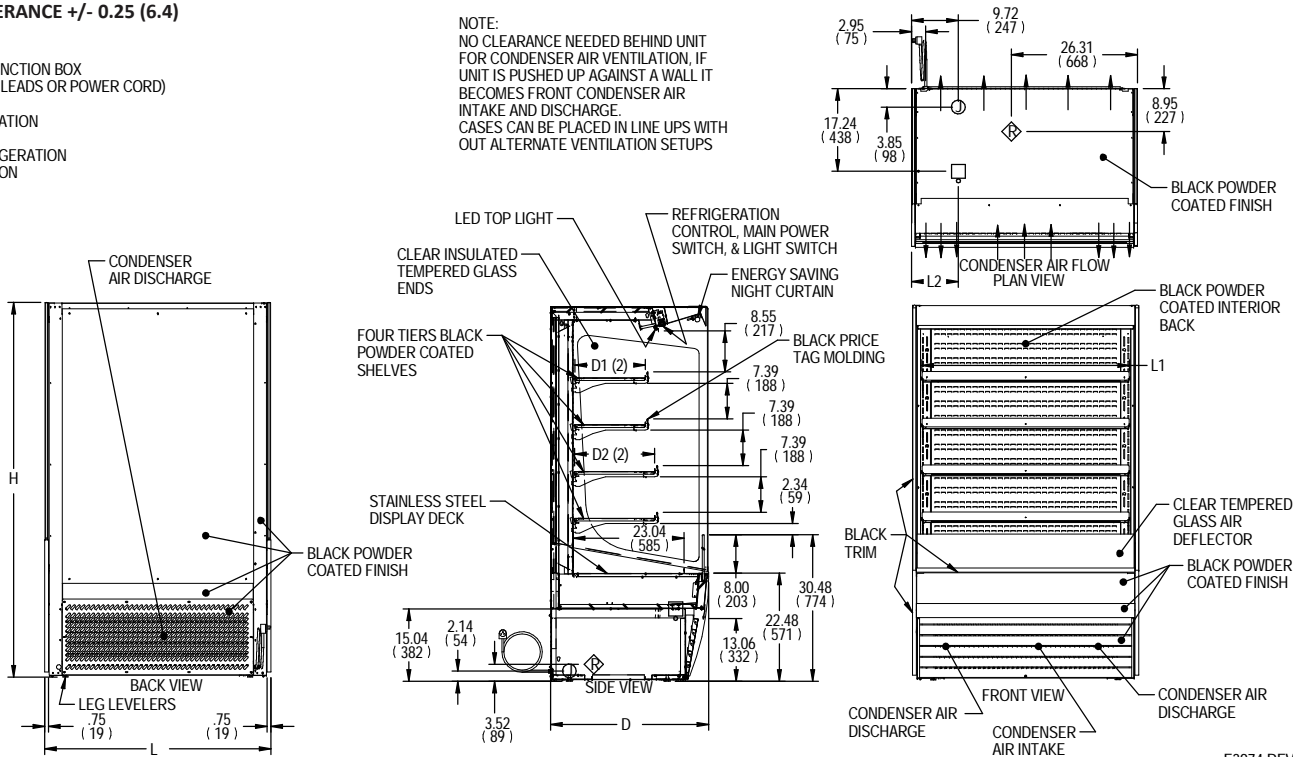
Intended Environment: Type II (Self Contained and Remote) - Designed to operate in maximum ambient conditions of 80°F (24°C) and 55% relative humidity.

Zone	Intended Product To Be Displayed	Avg Prod Temp °F/°C
All	Packaged Refrigerated Products	38°F / {3.3°C}

**DIMENSION TOLERANCE +/- 0.25 (6.4)**

**SYMBOL KEY:**  
 **ELECTRICAL JUNCTION BOX**  
 (SUPPLIED W/6" LEADS OR POWER CORD)  
 **TUB DRAIN LOCATION**  
 **REMOTE REFRIGERATION**  
**LINE CONNECTION**

**NOTE:**  
NO CLEARANCE NEEDED BEHIND UNIT  
FOR CONDENSER AIR VENTILATION, IF  
UNIT IS PUSHED UP AGAINST A WALL IT  
BECOMES FRONT CONDENSER AIR  
INTAKE AND DISCHARGE.  
CASES CAN BE PLACED IN LINE UPS WITH  
OUT ALTERNATE VENTILATION SETUPS



E3974 REV -

										SELF CONTAINED						REMOTE					
MODEL	DIMENSIONS			TUB DRAIN	SHELVING			INTERIOR VOLUME CU FT	STANDARD CONNECTION CORD & PLUG				FREON	C.U. HP	SHIP WGHT	PERMANENT CONNECT		FREON	BTU'S @ + 20°	SHIP WGHT	
	L	D	H	L2	# OF TIERS	L	D1		D2	2 WIRE + GROUND	AMPS	MAX FUSE SIZE				NEMA CORD & PLUG	2 WIRE + GROUND				
	in	in	in	in		in	in		in						120/60/1						
	mm	mm	mm	mm		mm	mm		mm						AMPS		MAX FUSE SIZE			AMPS	MAX FUSE SIZE
VRSS3678S	36	33	78	6.74	4	32.25	14.634	16.634	19.47	120/60/1	12.7	20	NEMA 5-20P	R449A	3/4	740	2.5	15	R449A	6,720	695
	914	838	1981	171		819	372	423								336					315
VRSS4878S	47.25	33	78	13.49	4	43.25	14.634	16.634	25.74	208-240/60/1	12.5	20	NEMA 6-20P	R449A	1	820	3.0	15	R449A	9,580	775
	1200	838	1981	343		1099	372	423								372					351
VRSS6078S	59.25	33	78	14.12	4	55.25	14.634	16.634	32.58	208-240/60/1	13.5	20	NEMA 6-20P	R449A	1-1/4	1030	3.5	15	R449A	11,200	985
	1505	838	1981	359		1403	372	423								467					447
VRSS7278S	71.25	33	78	20.12	4	67.25	14.634	16.634	39.42	208-240/60/1	13.7	20	NEMA 6-20P	R449A	1-1/4	1080	3.5	15	R449A	12,300	1040
	1810	838	1981	511		1708	372	423								490					472

- Due to continuing engineering improvements, specifications are subject to change without notice.
- Case temperature will vary if the air curtain is disrupted.

