



*The Signature of Quality*

## FEDERAL INDUSTRIES

A Standex Company

215 Federal Avenue  
Belleville, Wisconsin 53508-9201

**Phone:** 800-356-4206

**Fax:** 608-424-3234

**Email:** Geninfo@Federalind.com

**Website:** Federalind.com

Project Name: \_\_\_\_\_

Item #: \_\_\_\_\_

Model #: \_\_\_\_\_ Qty: \_\_\_\_\_

Approval: \_\_\_\_\_

AIA #

SIS #

## VISION SERIES - High Profile Self-Serve Refrigerated Merchandiser - 60"

Designed with impulse sales in mind. Get maximum return from an attention-grabbing merchandiser and increase profits.



Model VRSS3660C Shown  
Solid Ends Shown

### OPTIONAL ACCESSORIES

- ☐ Special External Laminate Finish
- ☐ Graphics Package
- ☐ White Interior (Including Shelves)
- ☐ Stainless Steel Interior (Including Shelves)
- ☐ Stainless Steel Exterior Finish
- ☐ Reflective End Glass
- ☐ Additional Lighted (LED) Shelf
- ☐ Deli Meat Pegs
- ☐ Sliding Rear Access Doors
- ☐ Removable Security Cover
- ☐ Solid Right/Left End Panels (mirrored)

- ☐ LED Lights Below Shelves
- ☐ 2 1/2" recessed (63.5mm) or 4" (101.6mm) Casters (Self Contained Models Only)
- ☐ Legs, 6", (152mm)
- ☐ Skirt with Casters or Legs
- ☐ Joining Kit for Continuous Line-Ups
- ☐ Condensate Evaporator Assembly (Field Install) (Separate 120V, 20A Circuit Required) (Remote Only)
- ☐ Remote Refrigeration With Condensate Pump (R449a Refrigerant, EEV Included)
- ☐ Front Cart Bumper
- ☐ Reversing Condenser Coil Fan

\*Additional options available on the website and price list.

MODEL	DIMENSIONS (Includes End Panels)
<input type="checkbox"/> VRSS3660C	36 x 33 x 60 (in) 914 x 838 x 1524 (mm)
<input type="checkbox"/> VRSS4860C	47.25 x 33 x 60 (in) 1200 x 838 x 1524 (mm)
<input type="checkbox"/> VRSS6060C	59.25 x 33 x 60 (in) 1505 x 838 x 1524 (mm)
<input type="checkbox"/> VRSS7260C	71.25 x 33 x 60 (in) 1810 x 838 x 1524 (mm)

### STANDARD FEATURES

#### Model Features

- Welded powder coated steel base fabrication
- Choice of six standard laminates on exterior
- Black powder coated metal front & rear grill
- Black Trim
- Stainless steel display deck
- Glass end or black solid ends
- Black interior back panel
- Moisture resistant end panel construction
- Front air intake / front & rear discharge
- Energy saving night curtain
- Adjustable Leg Levelers
- Cord & Plug

#### Refrigeration

- Electronic temperature control with on demand defrost
- Refrigeration controls maintain 38°-40°F (3.3°-4.4°C) Note: Case temperature will vary if the air curtain is disrupted.
- Thermometer
- R449a refrigerant

#### Shelving

- Two tiers of adjustable black metal shelves with black price tag molding. Shelves can be flat or slanted downwards at 10°

#### Lighting

- 3500K LED top light

#### Agency Approvals

- UL, C-UL and UL Sanitation listed to NSF-7, Type II conditions
- DOE 2017 compliant






**WARRANTY\***  
One year Parts and Labor  
2nd thru 5th year part only  
service compressor  
(U.S.A. and Canada)

**Note: Information is subject to change at any time. Visit [www.federalind.com](http://www.federalind.com) for the most current specs.**

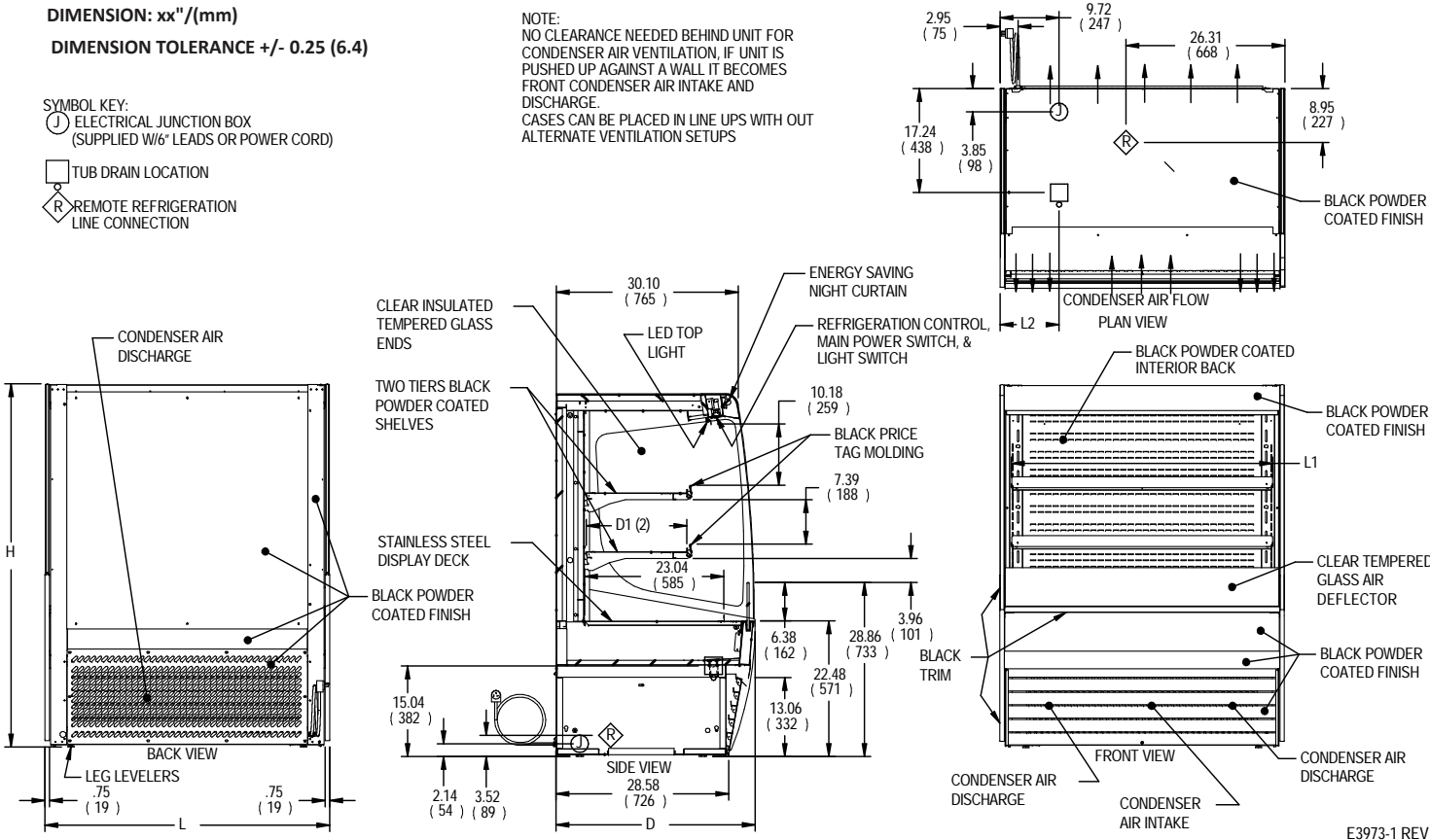
Intended Environment: Type II (Self Contained and Remote) - Designed to operate in maximum ambient conditions of 80°F (24°C) and 55% relative humidity.		
Zone	Intended Product To Be Displayed	Avg Prod Temp °F/°C
All	Packaged Refrigerated Products	38°F / [3.3°C]

**DIMENSION: xx"/(mm)**

**DIMENSION TOLERANCE +/- 0.25 (6.4)**

**SYMBOL KEY:**  
 ELECTRICAL JUNCTION BOX  
 (SUPPLIED W/6" LEADS OR POWER CORD)  
 TUB DRAIN LOCATION  
 REMOTE REFRIGERATION  
 LINE CONNECTION

**NOTE:**  
NO CLEARANCE NEEDED BEHIND UNIT FOR  
CONDENSER AIR VENTILATION, IF UNIT IS  
PUSHED UP AGAINST A WALL IT BECOMES  
FRONT CONDENSER AIR INTAKE AND  
DISCHARGE.  
CASES CAN BE PLACED IN LINE UPS WITH OUT  
ALTERNATE VENTILATION SETUPS



MODEL	DIMENSIONS			TUB DRAIN	SHELVING			INTERIOR VOLUME CU FT	STANDARD CONNECTION CORD & PLUG				REFRIG	C. U. HP	CONDENSATE REMOVAL	SHIP WGHT	PERMANENT CONNECT		REFRIG	BTU'S @ 26"	CONDENSATE REMOVAL	SHIP WGHT				
	L	D	H	L2	# OF TIERS	L1	D1		ELECTRICAL	AMPS	MAX FUSE SIZE	NEMA CORD & PLUG					2 WIRE + GROUND	LBS					120/60/1	AMPS	MAX FUSE SIZE	LBS
	in	in	in	in		in	in																			
	mm	mm	mm	mm		mm	mm																			
	VRSS3660C	36	33	60		6.74	2		32.25																	
VRSS4860C	47.25	33	60	13.49	2	43.25	16.634	18.48	208-240/60/1	12.5	20	NEMA 6-20P	R449A	1	INTEGRATED PAN	620 281	3.0	15	R449A	9,580	PUMP	580 263				
VRSS6060C	59.25	33	60	14.12	2	55.25	16.634	23.39	208-240/60/1	13.5	20	NEMA 6-20P	R449A	1-1/4	INTEGRATED PAN	755 342	3.5	15	R449A	11,200	PUMP	710 322				
VRSS7260C	71.25	33	60	20.12	2	67.25	16.634	28.30	208-240/60/1	13.7	20	NEMA 6-20P	R449A	1-1/4	INTEGRATED PAN	845 383	3.5	15	R449A	12,300	PUMP	800 363				

- Due to continuing engineering improvements, specifications are subject to change without notice.
- Case temperature will vary if the air curtain is disrupted.

