



The Signature of Quality

FEDERAL INDUSTRIES

A Standex Company
215 Federal Avenue
Belleville, WI 53508-9201
Phone: 800-356-4206
Fax: 608-424-3234
Email: geninfo@federalind.com
Website: www.federalind.com

Project Name: \_\_\_\_\_ AIA# \_\_\_\_\_
Item #: \_\_\_\_\_
Model #: \_\_\_\_\_ Qty: \_\_\_\_\_ SIS# \_\_\_\_\_
Approval: \_\_\_\_\_

REFRIGERATED SELF-SERVE COUNTER TOP MERCHANDISER

Designed to drive impulse sales of packaged food where retail space is limited.



Counter not included

Table with 2 columns: MODEL and DIMENSIONS (Includes End Panels). Row 1: TSSM2454, 24 x 28 x 54 (in) / 610 x 711 x 1372 (mm)

STANDARD FEATURES

Model Features

- Black exterior and galvanized steel back
Stainless steel slanted display deck, stainless steel interior
Choice of 3 standard exterior colors (black, white powder coated or grain stainless steel finishes
Side Air Intake & Top Discharge
Condenser Air Filter
Energy-saving night curtain
Black end panels with insulated glasspanes, argon filled
Cord and plug, NEMA 5-15P 90° Plug
Insulated with high-density urethane foam

Refrigeration

- Condensate pump provided
Electronic temperature controls maintain 38°-40° F / 3.3°-4.4°C case temperature. Note: Case temperature will vary if the air curtain is disrupted.
Coated Evaporator Coil
On-Demand Frost
Thermometer
R449a Refrigerant

Shelving

- Two adjustable stainless-steel shelves with 1 1/8" (28 mm) price tag molding. Shelves can be flat or slanted downwards at 10°

Lighting

- Top LED light and LED Shelf lights- 3500K.
IP66 rated

Agency Approvals

- UL Safety and UL Sanitation listed
DOE 2017 Compliant

OPTIONAL ACCESSORIES

- Stainless Steel Exterior and Interior
Stainless Steel Shelving
220V/50hz and 230V/60hz models available



WARRANTY\*
One year Parts and Labor (U.S.A and Canada)



Note: Information is subject to change at any time. Visit www.federalind.com for the most current specs.

AIA#

## REFRIGERATED SELF-SERVE COUNTER TOP MERCHANDISER

SIS#

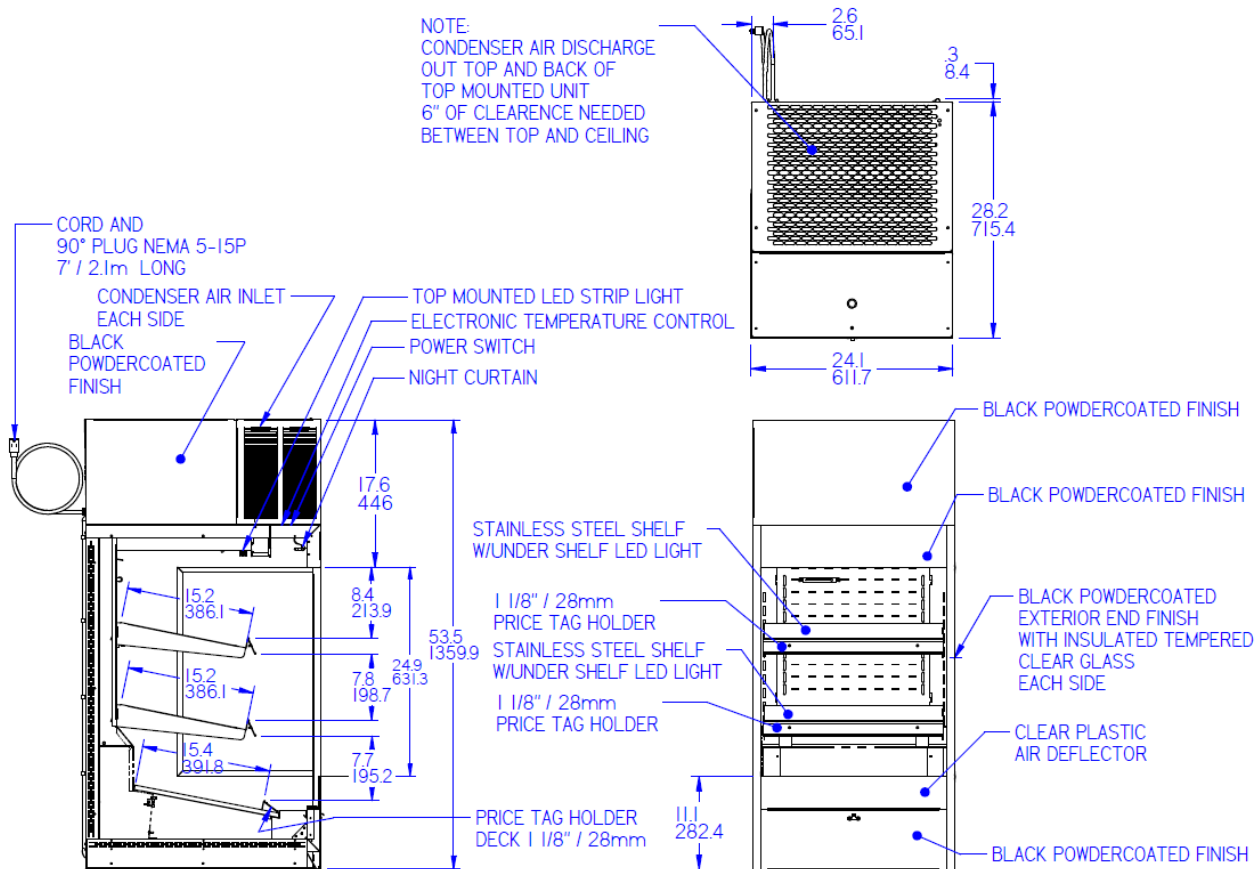
## Product Specifications

Intended Environment: Type I - Designed to operate in maximum ambient conditions of 75°F (24°C) and 55% relative humidity unless noted otherwise in system information below.

Zone	Intended Product To Be Displayed	Avg Prod Temp °F/°C
All	Packaged Refrigerated Products	38°F / (3.3°C)

DIMENSION: xx"/(mm)

DIMENSION TOLERANCE +/- 0.25 (6.4)



MODEL	DIMENSIONS				SHIPPING WHT		SHELVING	SELF CONTAINED	H.P.	OPTIONAL NEMA PLUG
	L	D	H1	UNITS	LBS	KILO		VOLTAGE		CONFIG (SC)
TSSM2454	24	28	54	in.	250	113	2 (15 x 22) in. (381 x 559) mm.	120/60/1	1/2 HP	NEMA 5-15P
	610	711	1372	mm.						

- Case temperature will vary if the air curtain is disrupted.
- Refrigerated cases are designed to operate in a maximum of 75°F (24°C) ambient and 55% relative humidity.
- Due to continuing engineering improvements, specifications are subject to change without notice.
- Condensate Pump Drain Hose must be routed to a remote drain at installation.



The Signature of Quality®

FEDERAL INDUSTRIES

A Standex Company

215 Federal Avenue Belleville, Wisconsin 53508-9201

Phone: 800-356-4206

Fax: 608-424-3234

Email: Geninfo@Federalind.com

Website: Federalind.com