



The Signature of Quality®

FEDERAL INDUSTRIES

A Standex Company
215 Federal Avenue
Belleville, WI 53508-9201

Phone: 800-356-4206
Fax: 608-424-3234
Email: geninfo@federalind.com
Website: www.federalind.com

Project Name: _____

Item #: _____

Model #: _____ Qty: _____

Approval: _____

AIA#

SIS#

CONVERTIBLE SERVICE OVER REFRIGERATED SELF-SERVE SPECIALTY MERCHANDISER

Display a variety of products and serve more customers with pre-presentation and value in mind.



Model SSRC5052 Shown

MODEL	DIMENSIONS (Includes End Panels)
<input type="checkbox"/> SSRC2452	24 x 34 x 52 (in) 610 x 864 x 1321 (mm)
<input type="checkbox"/> SSRC3652	36 x 34 x 52 (in) 914 x 864 x 1321 (mm)
<input type="checkbox"/> SSRC5052	50 x 34 x 52 (in) 1270 x 864 x 1321 (mm)
<input type="checkbox"/> SSRC5952	59 x 34 x 52 (in) 1499 x 864 x 1321 (mm)
<input type="checkbox"/> SSRC7752	77 x 34 x 52 (in) 1956 x 864 x 1321 (mm)

STANDARD FEATURES

Model Features: Self-Serve Bottom Display

- Steel base construction with black exterior
- Black interior, glass end panels
- Two-tier black display step
- Easily accessible light switch and adjustable power switch located at case rear
- Rear access to refrigeration system for quick and easy service
- Adjustable leg levelers

Model Features: Service Top Display

- Divided merchandising area (24" and 36" models have one display area only)
- Clear glass rear sliding doors (24" model has hinged door)
- Tempered lift-up thermopane front glass

Refrigeration

- Condensate evaporator provided for a totally self-contained system
- Electronic temperature controls maintain 38°-40°F case temperature.
- Easy clean, rustproof insulated evaporator coil compartment
- Insulated with high-density urethane foam
- R449a refrigerant
- Thermometer
- Baffle system converts display from non-refrigerated to refrigerated (Service Top Display)

Shelving

- Adjustable black wire shelf

Lighting

- 3500K LED top and shelf Light
- DLC Certified, IP66 rated

Agency Approvals

- UL and UL Sanitation listed
- DOE 2017 Compliant

OPTIONAL ACCESSORIES

- | | |
|---|--|
| <input type="checkbox"/> Reflective End Glass | <input type="checkbox"/> Black Wire or Glass Shelf with Light in Lieu of Display Steps |
| For Self-Serve Refrigerated Base | <input type="checkbox"/> Rear Wrapping Board |
| <input type="checkbox"/> Special Finish | For Service Top Display |
| <input type="checkbox"/> Energy Saving Night Curtain | <input type="checkbox"/> Reflective Rear Doors |
| <input type="checkbox"/> Security Night Cover | <input type="checkbox"/> Glass Shelves |
| <input type="checkbox"/> Solid Rear Sliding Access Doors for Bottom Section | <input type="checkbox"/> Casters (Recessed or 4") or 6" Legs |
| <input type="checkbox"/> Cord & Plug | |
| <input type="checkbox"/> Remote Refrigeration (R449a Refrigerant, EEV Included) | |



WARRANTY*
One year Parts and Labor
2nd thru 5th year part only service compressor
(U.S.A and Canada)



Note: Information is subject to change at any time.
Visit www.federalind.com for the most current specs.

AIA# CONVERTIBLE SERVICE OVER REFRIGERATED SELF-SERVE SPECIALTY MERCHANDISER

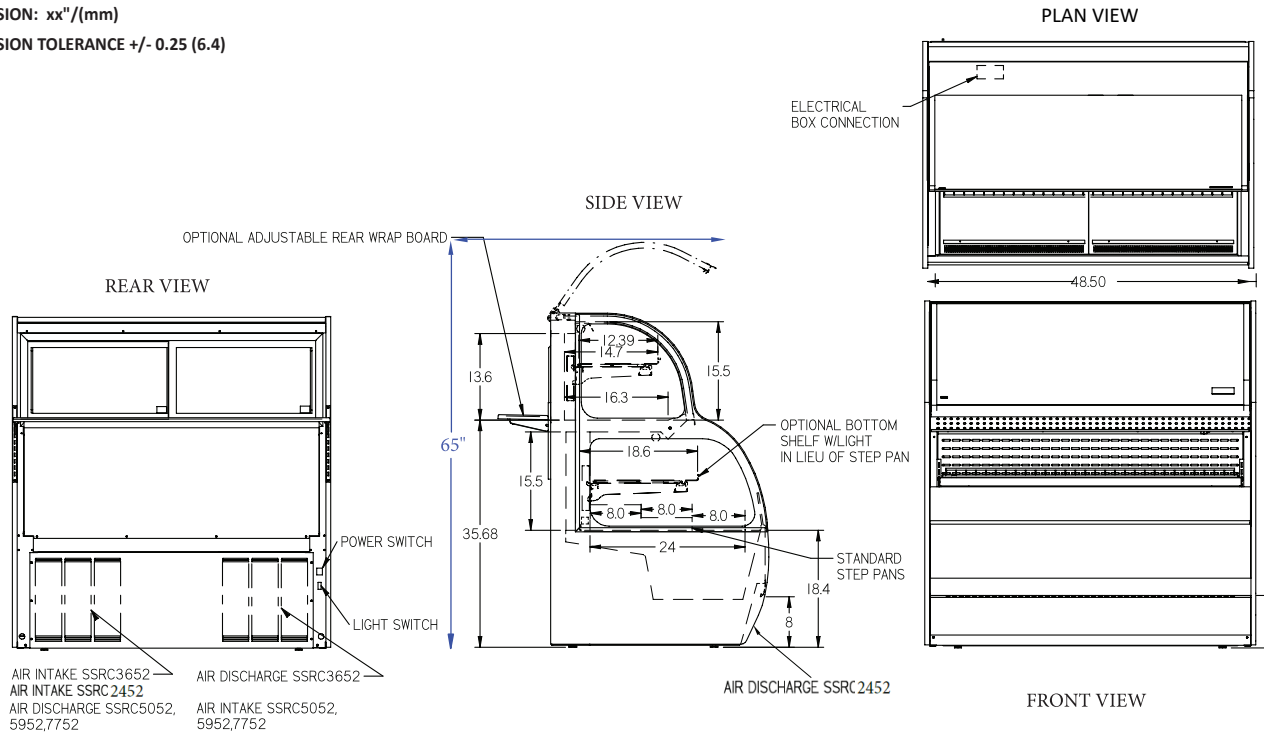
SIS# Product Specifications

Intended Environment: Type I - Designed to operate in maximum ambient conditions of 75°F (24°C) and 55% relative humidity unless noted otherwise in system information below.

Zone	Intended Product To Be Displayed	Avg Prod Temp °F/°C
All	Packaged Refrigerated Products	38°F / (3.3°C)

DIMENSION: xx"/(mm)

DIMENSION TOLERANCE +/- 0.25 (6.4)



MODEL	DIMENSIONS				SHIPPING WHT		SELF CONTAINED Permanently Connected			OPTIONAL NEMA PLUG	REMOTE	
	L	D	H1	UNITS	LBS	KILO	VOLTAGE	AMPS	H.P.	CONFIG (SC)	VOLTAGE	AMPS
SSRC2452	24	34	52	in.	470	213	120/60/1	11 AMPS	1/3 HP	NEMA 5-20P	120/60/1	10 AMPS
	610	864	1321	mm.								
SSRC3652	36	34	52	in.	590	268	120/60/1	15 AMPS	1/3 HP	NEMA 5-20P	120/60/1	10 AMPS
	914	864	1321	mm.								
SSRC5052	50	34	52	in.	720	327	208-240/60/1	10 AMPS	1/2 HP	NEMA 6-15P	120/60/1	10 AMPS
	1270	864	1321	mm.								
SSRC5952	59	34	52	in.	780	354	208-240/60/1	12 AMPS	1/2 HP	NEMA 6-20P	120/60/1	12 AMPS
	1499	864	1321	mm.								
SSRC7752	77	34	52	in.	950	431	208-240/60/1	13 AMPS	3/4 HP	NEMA 6-20P	120/60/1	12 AMPS
	1956	864	1321	mm.								

- Refrigerated cases are designed to operate in a maximum of 75°F (24°C) ambient and 55% relative humidity.
- Due to continuing engineering improvements, specifications are subject to change without notice.
- IF GFCI is required, a GFI Breaker must be used in lieu of GFCI receptacle.



FEDERAL INDUSTRIES
A Standex Company
215 Federal Avenue, Belleville, Wisconsin 53508-9201

Phone: 800-356-4206
Fax: 608-424-3234
Email: Geninfo@Federalind.com
Website: Federalind.com