



The Signature of Quality

**FEDERAL INDUSTRIES**

A Standex Company

215 Federal Avenue Belleville  
Wisconsin 53508-9201

Phone: 800-356-4206

Fax: 608-424-3234

Email: Geninfo@Federalind.com

Website: Federalind.com

Project Name: \_\_\_\_\_

Item #: \_\_\_\_\_

Model #: \_\_\_\_\_ Qty: \_\_\_\_\_

Approval: \_\_\_\_\_

AIA #

SIS #

**Italian Glass Refrigerated Self-Serve Merchandiser**

Designed for customers looking for a rich, up-scale Italian styling for maximum visual appeal that will drive product sales.



Model ITRSS4834-B18  
Shown with optional laminate

MODEL	DIMENSIONS (Includes End Panels)
<input type="checkbox"/> ITRSS3626-B18	36 x 33 x 44 (in) 914 x 838 x 1118 (mm)
<input type="checkbox"/> ITRSS4826-B18	48 x 33 x 44 (in) 1219 x 838 x 1118 (mm)
<input type="checkbox"/> ITRSS6026-B18	60 x 33 x 44 (in) 1524 x 838 x 1118 (mm)
<input type="checkbox"/> ITRSS3634-B18	36 x 33 x 52 (in) 914 x 838 x 1321 (mm)
<input type="checkbox"/> ITRSS4834-B18	48 x 33 x 52 (in) 1219 x 838 x 1321 (mm)
<input type="checkbox"/> ITRSS6034-B18	60 x 33 x 52 (in) 1524 x 838 x 1321 (mm)

**STANDARD FEATURES**

**Model Features**

- Powder coated steel base construction with a choice of six standard laminates
- Stainless steel interior
- All tempered thermo-pane glass construction
- Removable tempered sliding glass rear doors
- Adjustable Leg Levelers
- Rear air intake and discharge
- Energy Saving Night Curtain

**Refrigeration**

- Electronic temperature control with on demand defrost
- PTC Condensate evaporator provided for a totally self-contained system
- Easily accessible light switch, power switch, and electronic temperature control
- Average product temperature of 38°F (3.3°C) to 40°F (4.4°C)
- R513a Refrigerant (R449a in Remote Applications)
- Adjustable tempered glass shelves. Shelves are adjustable up and down and can be tilted in two positions (0°/5° angle). 4" (864mm) models have three tiers of shelves; 26" (660) models have two tiers of shelves.

**Lighting**

- 3500K LED top light and shelf lights
- DLC Certified, IP66 rated

**Agency Approvals**

- UL, C-UL, and UL Sanitation Listed to NSF-7, Type I conditions
- DOE 2017 Compliant

**OPTIONAL ACCESSORIES**

- Special Base Laminates
- Condensate Pump
- Cord & Plug [6'/1829mm] [SC Models only]
- Stainless Steel Shelving
- Reflective Ends
- Front Air Intake & Discharge
- 4"/102mm Casters
- Recessed Casters
- 6"/152mm Legs with or without skirt
- Rear Package
- Remote Condensing Unit (R449a Refrigerant, EEV Included)
- Joining Kit for Continuous Line Ups



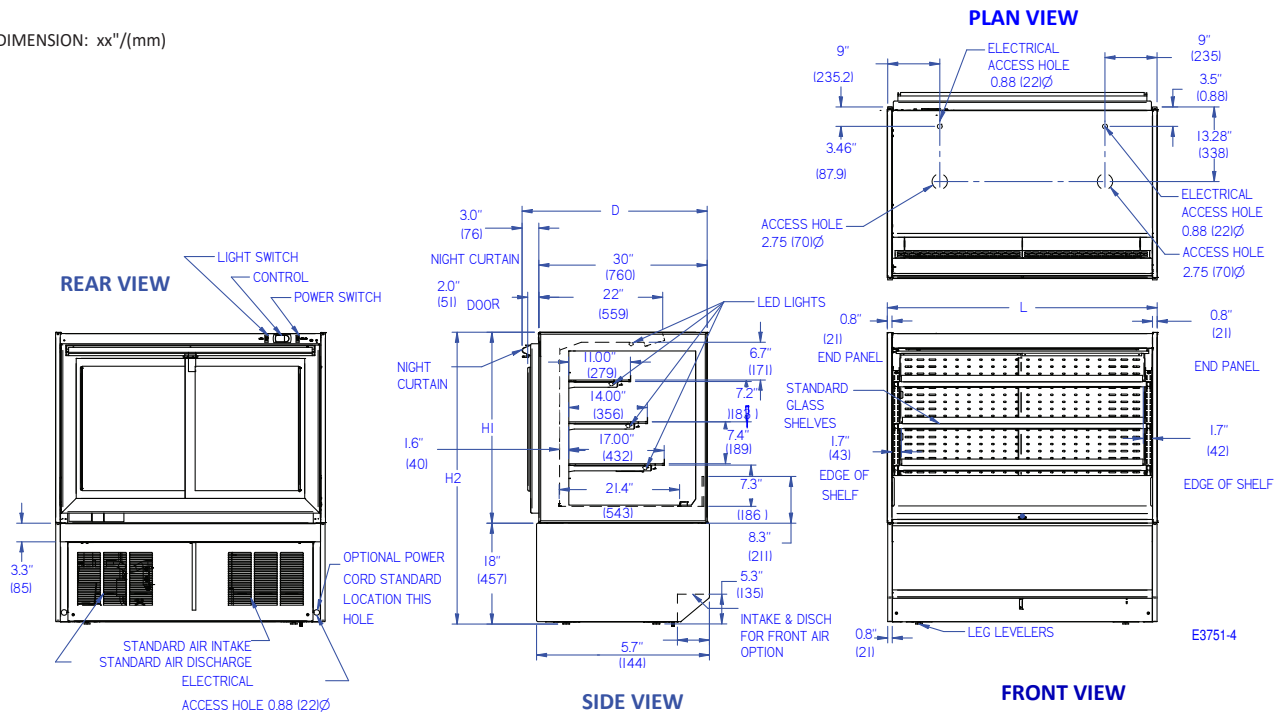
Note: Information is subject to change at any time. Visit [www.federalind.com](http://www.federalind.com) For the most current specs.

AIA #	<h1>Italian Glass Refrigerated Self-Serve Merchandiser</h1>
SIS #	<b>Product Specifications</b>

Intended Environment: Type I - Designed to operate in ambient conditions of 75°F [24°C] and 55% relative humidity unless noted otherwise in system information below.

Zone	Intended product to be displayed	Avg prod temp °F / °C
All	Packaged refrigerated products	38°F / (3.3°C)

DIMENSION: xx"/(mm)



DIMENSION TOLERANCE +/- 0.19 (4.8)

MODEL	DIMENSIONS					SHELVES	SHIPPING WHT		SELF CONTAINED Permanently Connected		OPTIONAL NEMA PLUG	REMOTE		BTU @ 20 °F
	L	D	H1	H2	UNITS		LBS	KILO	VOLTAGE	AMPS	CONFIG [SC]	VOLTAGE	AMPS	
ITRSS3626-B18	36	33	26	44	in.	2	520	236	120/60/1	MAX FUSE 20	NEMA 5-20	120/60/1	MAX FUSE 15	3900
	914	838	661	1118	mm.									
ITRSS4826-B18	48	33	26	44	in.	2	635	288	120/60/1	MAX FUSE 25	NEMA 5-20	120/60/1	MAX FUSE 15	4700
	1219	838	661	1118	mm.									
ITRSS6026-B18	60	33	26	44	in.	2	760	345	208-240/60/1	MAX FUSE 20	NEMA 6-15	120/60/1	MAX FUSE 15	5750
	1524	838	661	1118	mm.									
ITRSS3634-B18	36	33	34	52	in.	3	560	254	120/60/1	MAX FUSE 20	NEMA 5-20	120/60/1	MAX FUSE 15	3900
	914	838	864	1321	mm.									
ITRSS4834-B18	48	33	34	52	in.	3	670	304	120/60/1	MAX FUSE 25	NEMA 5-20	120/60/1	MAX FUSE 15	4700
	1219	838	864	1321	mm.									
ITRSS6034-B18	60	33	34	52	in.	3	795	361	208-240/60/1	MAX FUSE 20	NEMA 6-15	120/60/1	MAX FUSE 15	5750
	1524	838	864	1321	mm.									

- Refrigerated cases are designed to operate in a maximum of 75°F (24°C) ambient and 55% relative humidity.
- Due to continuing engineering improvements, specifications are subject to change without notice.
- Package food products placed in case must be pre-chilled to 40°F (4.4°C) degrees before placing in case.



**FEDERAL INDUSTRIES**  
 A Standex Company  
 215 Federal Avenue, Belleville, Wisconsin 53508-9201

**Phone:** 800-356-4206  
**Fax:** 608-424-3234  
**Email:** Geninfo@Federalind.com  
**Website:** Federalind.com