



The Signature of Quality®

### FEDERAL INDUSTRIES

A Standex Company  
215 Federal Avenue  
Belleville, WI 53508-9201

Phone: 800-356-4206  
Fax: 608-424-3234  
Email: geninfo@federalind.com  
Website: www.federalind.com

Project Name: \_\_\_\_\_

Item #: \_\_\_\_\_

Model #: \_\_\_\_\_ Qty: \_\_\_\_\_

Approval: \_\_\_\_\_

AIA#

SIS#

## REFRIGERATED SELF-SERVE ISLAND MERCHANDISER

Designed with impulse sales in mind. Get maximum return and increased profits with shop-around merchandising.

MODEL	DIMENSIONS
<input type="checkbox"/> IMSS120SC-2	120.5 x 40.50 x 57 (in) 3061 x 1029 x 1448 (mm)
<input type="checkbox"/> IMSS120SC-3	120.5 x 40.50 x 62 (in) 3061 x 1029 x 1575 (mm)



Model IMSS120SC-3 Shown

### STANDARD FEATURES

#### Model Features

- Black metal base, interior and canopy. Choice of six standard laminates on exterior. Other color laminates are optional
- Curved Air Deflector
- Easily accessible light switch and temperature control
- Insulated with high-density foam
- Adjustable Leg Levelers

#### Refrigeration

- Condensate evaporator provided for a totally self-contained system
- Condensate pump provided on model IMSS120SC-2 and all remote models
- Easy clean, rust-proof insulated evaporator coil compartment
- Refrigeration controls maintain 38°-40° F. Note: Case temperature will vary if the air curtain is disrupted
- R449a Refrigerant (R449a in Remote Applications)
- Thermometer

#### Shelving

- Adjustable black metal shelves, two or three tiers

#### Lighting

- 3500K LED top and under shelf lighting
- DLC Certified, IP66 rated

#### Agency Approvals

- UL Safety and UL Sanitation Listed to NSF Standard No. 7
- DOE 2017 Compliant

### OPTIONAL ACCESSORIES

- Special Color Laminated Exterior Finish
- Recessed Casters or Legs
- Cord and Plug ( 30 AMP )
- Remote Refrigeration (EEV Included)
- Condensate Pump
- Cart Bumper
- Top-Mounted Electrical



**WARRANTY\***  
One year Parts and Labor  
2nd thru 5th year part  
only service compressor  
(U.S.A and Canada)



Note: Information is subject to change at any time.  
Visit [www.federalind.com](http://www.federalind.com) for the most current specs.

AIA#

## REFRIGERATED SELF-SERVE ISLAND MERCHANDISER

SIS#

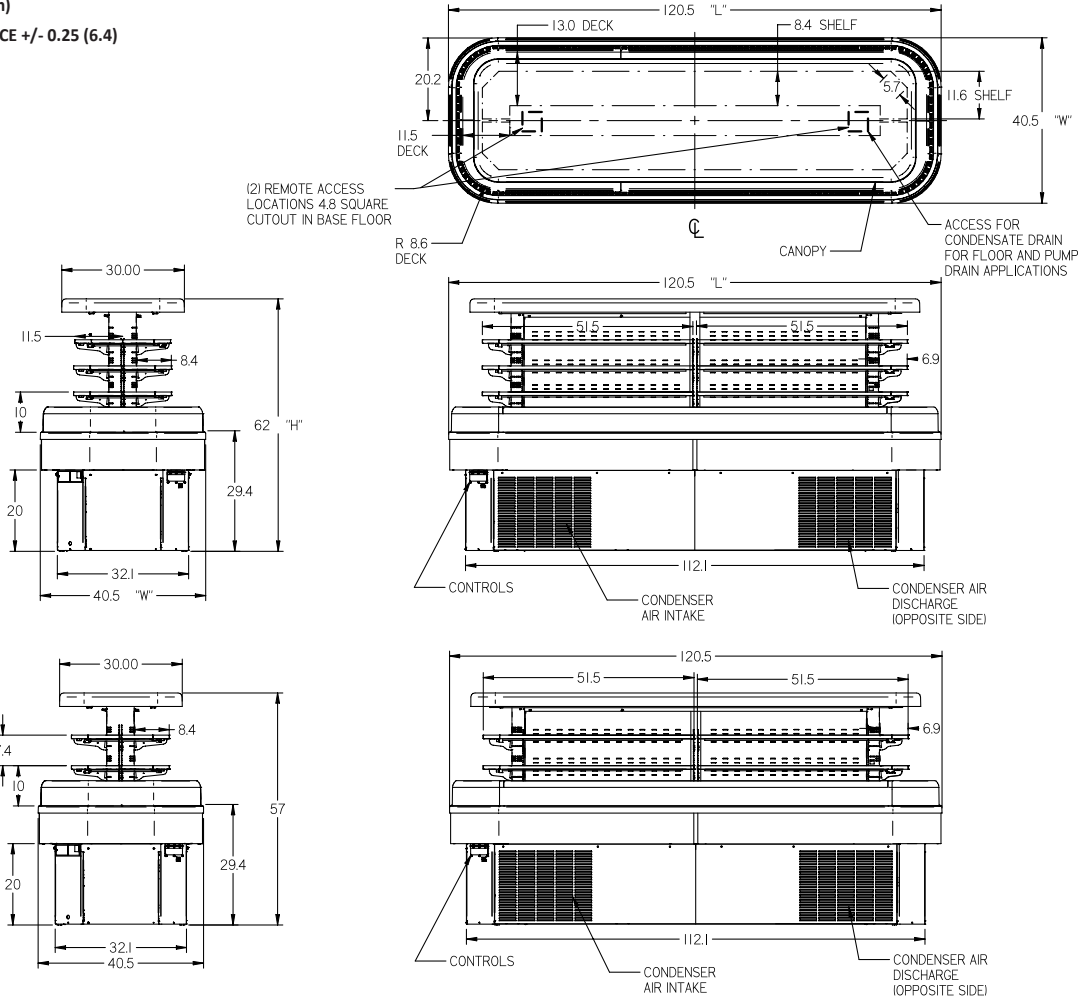
## Product Specifications

Intended Environment: Type I - Designed to operate in maximum ambient conditions of 75°F (24°C) and 55% relative humidity unless noted otherwise in system information below.

Zone	Intended Product To Be Displayed	Avg Prod Temp °F/°C
All	Packaged Refrigerated Products	38°F / (3.3°C)

DIMENSION: xx"/(mm)

DIMENSION TOLERANCE +/- 0.25 (6.4)



MODEL	DIMENSIONS				DISPLAY AREA (SQ. FT.)	SHIPPING WHT		SELF CONTAINED Permanently Connected			OPTIONAL NEMA PLUG	REMOTE WITH CONDENSATE PAN	
	L	D	H1	UNITS		LBS	KILO	VOLTAGE	AMPS	H.P.	CONFIG (SC)	VOLTAGE	AMPS
IMSS120SC-2	120.5	40.5	57	in.	2 TIERS - 45.9	1550	703	208-240/60/1	40 AMPS	2-1/2 HP	30 AMP	208-240/60/1	13 AMPS
	3061	1029	1448	mm.									
IMSS120SC-3	120.5	40.5	62	in.	3 TIERS - 58.3	1600	726	208-240/60/1	40 AMPS	2-1/2 HP	30 AMP	208-240/60/1	13 AMPS
	3061	1029	1575	mm.									

- NOTE WHEN DIRECT WIRING THE CASE, A 25 AMP MINIMUM CIRCUIT IS REQUIRED ON THE IMSS60SC AND A 30 AMP MINIMUM CIRCUIT IS REQUIRED ON THE IMSS84SC.
- Case temperature will vary if the air curtain disrupted
- Refrigerated cases are designed to operate in a maximum of 75°F (24°C) ambient and 55% relative humidity.
- Due to continuing engineering improvements, specifications are subject to change without notice.



The Signature of Quality®

FEDERAL INDUSTRIES

A Standex Company

215 Federal Avenue Belleville, Wisconsin 53508-9201

Phone: 800-356-4206

Fax: 608-424-3234

Email: Geninfo@Federalind.com

Website: Federalind.com