



The Signature of Quality®

**FEDERAL INDUSTRIES**

A Standex Company  
215 Federal Avenue  
Belleville, WI 53508-9201

Phone: 800-356-4206  
Fax: 608-424-3234  
Email: geninfo@federalind.com  
Website: www.federalind.com

Project Name: \_\_\_\_\_

Item #: \_\_\_\_\_

Model #: \_\_\_\_\_ Qty: \_\_\_\_\_

Approval: \_\_\_\_\_

AIA#

SIS#

## CURVED GLASS HORIZONTAL DUAL ZONE CASE

Sleek curved-glass styling blends with traditional design elements to maximize performance.



| MODEL                               | DIMENSIONS<br>( Includes End Panels )             |
|-------------------------------------|---|
| <input type="checkbox"/> CGR3660DZH | 36.13 x 35.31 x 60 (in)<br>918 x 897 x 1524 (mm)  |
| <input type="checkbox"/> CGR5060DZH | 50.13 x 35.31 x 60 (in)<br>1273 x 897 x 1524 (mm) |
| <input type="checkbox"/> CGR5960DZH | 59.13 x 35.31 x 60 (in)<br>1502 x 897 x 1524 (mm) |
| <input type="checkbox"/> CGR7760DZH | 77.13 x 35.31 x 60 (in)<br>1959 x 897 x 1524 (mm) |

### STANDARD FEATURES

#### Model Features

- Curved glass styling.
- Bottom section refrigerated, top section non-refrigerated.
- Removable sliding rear doors, shelf lights, shelf supports, and shelves.
- Steel base construction with a choice of six standard laminates on base. Other finishes optional.
- Black trim.
- White scratch-resistant display decks.
- Adjustable Leg Levelers

#### Added Features for Refrigerated Side

- Condenser air filter on self-contained units.
- Thermometer.
- Condensate evaporator provided for a totally self-contained system.
- Oversized coil and low-velocity fan system maintains high humidity and product freshness.
- Easy clean, rustproof insulated evaporator coil compartment.
- Adjustable temperature control.
- Average case temperature of 38° to 40° is maintained.
- Rear access of the refrigeration system for quick and easy service.
- R513a Refrigerant.

#### Shelving

- Adjustable white wire shelves. Shelves are adjustable up and down and can also be tilted in two positions.

#### Lighting

- 3000K LED top light and shelf lights.
- DLC Certified , IP66 rated

#### Agency Approvals

- UL Safety and UL Sanitation listed
- DOE 2017 Compliant

### OPTIONAL ACCESSORIES

- |  |  |
|--|--|
| <input type="checkbox"/> Special Base Finish                                     | <input type="checkbox"/> White or Mirrored Interior    |
| <input type="checkbox"/> Glass Shelves   | <input type="checkbox"/> Ends With Laminated Exterior  |
| <input type="checkbox"/> Rear Wrapping Board                                     | <input type="checkbox"/> Reflective Rear Doors         |
| <input type="checkbox"/> Cord & Plug   | <input type="checkbox"/> Casters/Cord & Plug Included  |
| <input type="checkbox"/> Remote Condensing Unit (449a Refrigerant, EEV Included) | <input type="checkbox"/> (Self-Contained Models Only)  |
| <input type="checkbox"/> Black, Gold, or Chrome Wire Shelves                     | <input type="checkbox"/> Legs                          |
| <input type="checkbox"/> Reflective Ends   | <input type="checkbox"/> Package Shelf                 |
|  | <input type="checkbox"/> LED Light Below Package Shelf |



**WARRANTY\***  
One year Parts and Labor  
2nd thru 5th year part  
only service compressor  
(U.S.A and Canada)

Note: Information is subject to change at any time.  
Visit [www.federalind.com](http://www.federalind.com) for the most current specs.

AIA#

# CURVED GLASS HORIZONTAL DUAL ZONE CASE

SIS#

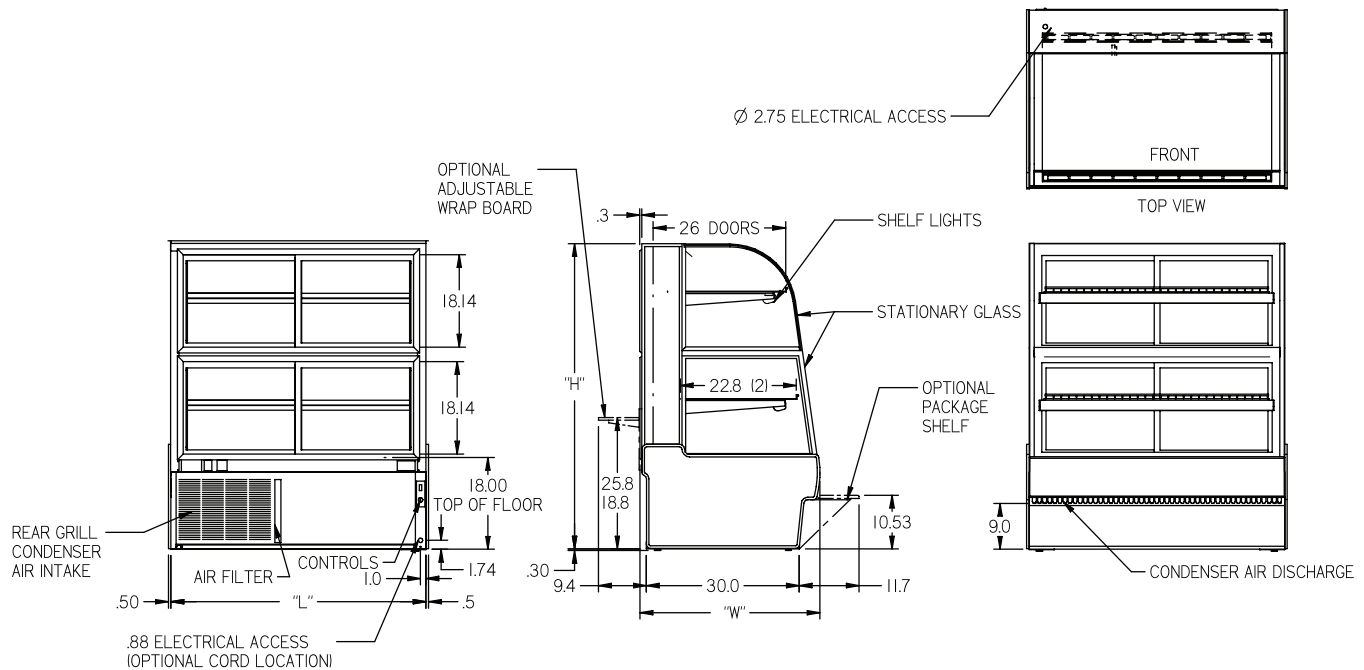
## Product Specifications

Intended Environment: Type I - Designed to operate in maximum ambient conditions of 75°F (24°C) and 55% relative humidity unless noted otherwise in system information below.

| Zone | Intended Product To Be Displayed | Avg Prod Temp °F/°C |
|------|----------------------------------|---------------------|
| All  | Packaged Refrigerated Products   | 38°F / (3.3°C)      |

DIMENSION: xx"/(mm)

DIMENSION TOLERANCE +/- 0.25 (6.4)



| MODEL      | DIMENSIONS |       |      |       | SELF-CONTAINED<br>Permanently Connected | REMOTE<br>120/60/1 | NEMA<br>PLUG |
|------------|------------|-------|------|-------|---|--------------------|--------------|
|            | L          | D     | H1   | UNITS |   |                    |              |
| CGR3660DZH | 36.13      | 35.31 | 60   | in.   | 1/3 HP - 8.0 AMPS                       | 2.3 AMPS           | NEMA 5-15P   |
|            | 918        | 897   | 1524 | mm.   |   |                    |              |
| CGR5060DZH | 50.13      | 35.31 | 60   | in.   | 1/2 HP - 10.5 AMPS                      | 2.3 AMPS           | NEMA 5-15P   |
|            | 1273       | 897   | 1524 | mm.   |   |                    |              |
| CGR5960DZH | 59.13      | 35.31 | 60   | in.   | 1/2 HP - 12.0 AMPS                      | 2.5 AMPS           | NEMA 5-15P   |
|            | 1502       | 897   | 1524 | mm.   |   |                    |              |
| CGR7760DZH | 77.13      | 35.31 | 60   | in.   | 3/4 HP - 15.4 AMPS                      | 3.3 AMPS           | NEMA 5-20P   |
|            | 1959       | 897   | 1524 | mm.   |   |                    |              |

- If a GFCI circuit is required, a GFCI Breaker MUST be used instead of GFCI receptacle.
- Refrigerated cases are designed to operate in a maximum of 75°F (24°C) ambient and 55% relative humidity.
- Due to continuing engineering improvements, specifications are subject to change without notice.



The Signature of Quality®

**FEDERAL INDUSTRIES**

A Standex Company

215 Federal Avenue, Belleville, Wisconsin 53508-9201

Phone: 800-356-4206

Fax: 608-424-3234

Email: [Geninfo@Federalind.com](mailto:Geninfo@Federalind.com)

Website: [Federalind.com](http://Federalind.com)