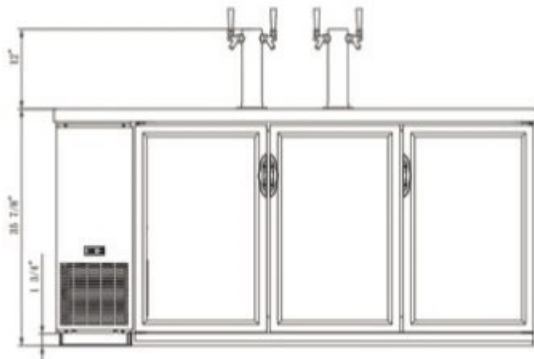


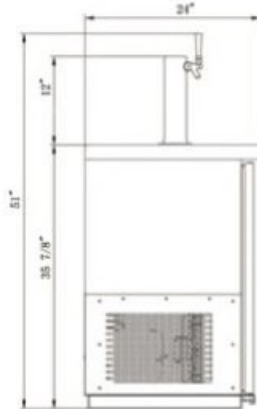
DETAILS & SPECIFICATIONS

KEGERATOR

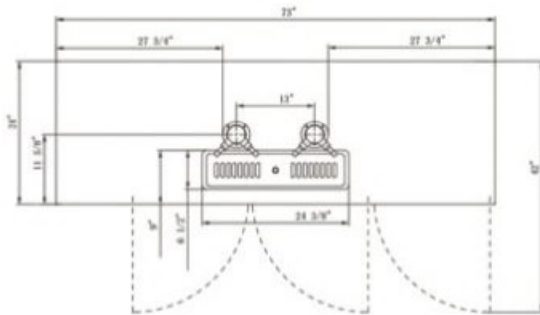
Front View



Side View



Top View



MODEL	EXTERNAL DIMENSION WXD XH (INCHES)	PACKAGING DIMENSION WXD XH (INCHES)	PRODUCT NET WEIGHT	40FT (PCS)
DDB72-M3	73"x24"x35 7/8"	75 3/8"x26 3/8"x43 1/4"	330 lbs	36

* All measures are presented in inches and pounds



KEGERATOR MODEL DDB72-M3



PRODUCT FEATURES

- The Dukers draft beer system has ample space to withhold different keg of beers. Beer dispenses through a single tube with two handles, and the tube is lined with silver to ensure bacterial resistance.
- Defrosts automatically to reduce ice buildup, and its evaporator coil is epoxy coated so it won't corrode. Designed with stainless steel construction, the top can be used as a durable workstation that's convenient to wipe clean.
- Equipped with electronic controls, users can adjust the temperature of the Dukers draft beer cooler from 33 to 38 degrees Fahrenheit.
- Heavy-duty casters with brakes are included providing the unit with convenient mobility. Just roll the unit away from the wall.

TECHNICAL SPECIFICATIONS

Voltage/Frequency	110V/60Hz
Refrigerant	R290
Type of Defrost	Automatic
Internal Material	Stainless Steel
Exterior Material	Stainless Steel
Temperature Range °F	33 - 38°
Compressor Power (HP)	1/4+
Nema Config.	NEMA5-15P



Beer Dispenser



Drip Tray

HIGH QUALITY STAINLESS STEEL & ROBUST DESIGN



Los Angeles | San Francisco | Dallas
Houston | Florida | Chicago | New Jersey

1-800-931-8628

info@dukersusa.com

www.DukersUSA.com



Los Angeles | San Francisco | Dallas
Houston | Florida | Chicago | New Jersey

1-800-931-8628

info@dukersusa.com

www.DukersUSA.com