

Refrigerated Service Slide In Counter Case



- ☐ NE3627RSV
- ☐ NE4827RSV
- ☐ NE6027RSV
- ☐ NE7227RSV

Lengths include end panels

35-3/4"L x 33"D x 27-7/8"H
47-3/4"L x 33"D x 27-7/8"H
59-3/4"L x 33"D x 27-7/8"H
71-3/4"L x 33"D x 27-7/8"H

STANDARD FEATURES

- NOTE: Glass warranty only applicable to first point of delivery
- Breeze~E (Type-II) w/ EnergyWise s/c refrigeration
- (2) Levels of clear glass shelving removable and adjustable on 1" centers
- Blue Fin coated coil
- Compressor air rear intake, front discharge
- Condensate pan (self-contained refrig. only)
- Integrated average product temperature of 40°F or less
- LED top & shelf lights
- NOTE: Overall case height is 47-1/8" (includes below counter)
- One piece formed ABS plastic tub
- One year parts & labor; 5 year compressor warranty
- Slide in base
- Vertical, fixed front & side UV bonded frameless glass

Features	Standard	Options
EXTERIOR COLOR	<input type="checkbox"/> Black	<input type="checkbox"/> Painted (non-stock colors, specify RAL#) <input type="checkbox"/> Painted (stock colors, specify RAL#) <input type="checkbox"/> Stainless steel
INTERIOR COLOR	<input type="checkbox"/> Black	<input type="checkbox"/> NOTE: Interior color must be FDA & NSF approved <input type="checkbox"/> Painted (stock colors, specify RAL#) <input type="checkbox"/> Stainless steel
LEFT END GLASS	<input type="checkbox"/> Glass end	<input type="checkbox"/> No end glass w/ synchronized defrost
RIGHT END GLASS	<input type="checkbox"/> Glass end	<input type="checkbox"/> No end glass w/ synchronized defrost
UPPER REAR	<input type="checkbox"/> Clear glass rear sliding doors	<input type="checkbox"/> Reflective glass rear sliding doors
LIGHTS	<input type="checkbox"/> LED 3500K w/ frosted lens	<input type="checkbox"/> LED 3000K w/ frosted lens <input type="checkbox"/> LED 4000K w/ frosted lens
ELECTRICAL CONNECT	<input type="checkbox"/> 6' Straight blade power cord (self-cont.)	<input type="checkbox"/> 6' Locking power cord (self-cont.) <input type="checkbox"/> Electrical leads (remote)
REAR VENTED PANEL	<input type="checkbox"/> None	<input type="checkbox"/> NOTE: Unit can intake & discharge from rear w/ optional rear vented panel <input type="checkbox"/> Painted (stock colors, specify RAL#) <input type="checkbox"/> Stainless steel
REFRIGERATION	<input type="checkbox"/> Breeze~E (Type-II) w/ EnergyWise s/c refrigeration (rear access)	<input type="checkbox"/> Breeze~E (Type-II) w/ EnergyWise s/c refrigeration (front access) (see important notes) <input type="checkbox"/> Remote w/thermostat, solenoid & TXV (rear access)
MISCELLANEOUS		<input type="checkbox"/> Rear door lock <input type="checkbox"/> Second year parts & labor warranty (excludes compressor)
ACCESSORIES		<input type="checkbox"/> Clean Sweep® coil cleaner (n/a w/remote)

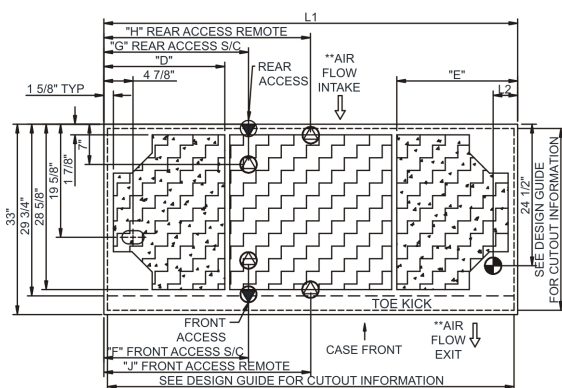
Reveal[®]

Product Specifications

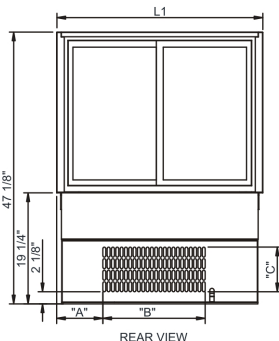
Intended Environment: Type II - Designed to operate in ambient conditions of 80°F and 60% relative humidity unless noted otherwise in system information below.

Zone	Intended Product To Be Displayed	Warmest Avg Prod Temp ° F
1	Unpackaged refrigerated products	40

PLAN VIEW

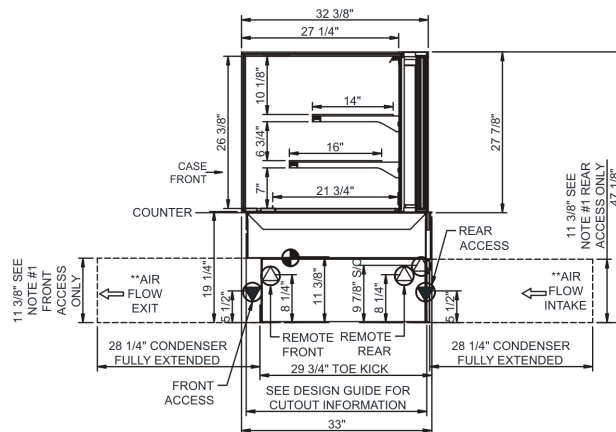


	"D"	"E"	"F"	"G"	"H"	"J"
NE3627RSV	N/A	N/A	7"	7"	17 7/8"	17 7/8"
NE4827RSV	9"	9"	12 3/4"	12 3/4"	23 7/8"	23 7/8"
NE6027RSV	9"	21"	12 3/4"	24 3/4"	29 7/8"	29 7/8"
NE7227RSV	21"	21"	25 1/8"	25 1/8"	35 7/8"	35 7/8"



	"A"	"B"	"C"
NE3627RSV	8"	17 3/4"	7 3/4"
NE4827RSV	14"	17 3/4"	7 3/4"
NE6027RSV	26"	17 3/4"	7 3/4"
NE7227RSV	26"	17 3/4"	7 3/4"

SIDE VIEW



NOTES:

- 11 3/8" TALL, FULL WIDTH OF CASE OPENING IN CABINET OR COUNTER IS REQUIRED TO PULL OUT REFRIGERATION SYSTEM.
- SEE DESIGN GUIDE FOR CUTOUT SIZE IN CABINET FOR CASE TO DROP INTO.
- BACK OF COUNTER / CABINET MUST BE VENTED PROPERLY FOR ADEQUATE AIRFLOW TO CONDENSER.
- **REPRESENTS REAR PULLOUT REFRIGERATION. AIR FLOW INTAKE AND EXIT DETAILS ARE REVERSED WITH FRONT PULLOUT REFRIGERATION OPTION.
- SELF-CONTAINED ACCESS ONLY BY PULLING OUT CONDENSER UNIT.
- SEE "COUNTER INSTALLATION GUIDE" FOR AIR FLOW REQUIREMENTS.

NOTE: ALL DIMENSIONS APPROXIMATE

- ELECTRICAL JUNCTION BOX**
(SUPPLIED WITH 6" LEADS OR POWER CORD).
- LOCATION OF DRAIN TUBE FOR REMOTE REF.**
ONLY (SUPPLIED WITH 3/4" OR 1 1/2" PVC TUBE).

- REFRIGERATION LINE CONNECTION.**
- REMOTE FLOOR SINK & UTILITIES ACCESS AREA.**

- SELF-CONTAINED CASE SERVICE ACCESS AREA.**
- DRY CASE SERVICE ACCESS AREA.**

Model Technical Specifications

Model	L"	L1"	L2"	System Circuit Volts	Phs	Freq	Amps ***	Watts	Wires	NEMA Plug	SST	Conv. Rack BTUH	Para. Rack BTUH	Est Wt
NE3627RSV	N/A	35.75	4.13	Remote(Type I)	Circuit #1	110-120	1	60	1.08	35 2+G	Leads Single	24.00	907	840
				Remote(Type II)	Circuit #1	110-120	1	60	1.08	35 2+G	Leads Single	24.00	1015	940
				Self-Contained	Circuit #1	110-120	1	60	9.76	765 2+G	5-15P or L5-15P	N/A	N/A	N/A
NE4827RSV	N/A	47.75	4.13	Remote(Type I)	Circuit #1	110-120	1	60	1.08	41 2+G	Leads Single	24.00	1166	1080
				Remote(Type II)	Circuit #1	110-120	1	60	1.08	41 2+G	Leads Single	24.00	1318	1220
				Self-Contained	Circuit #1	110-120	1	60	9.76	770 2+G	5-15P or L5-15P	N/A	N/A	N/A
NE6027RSV	N/A	59.75	4.13	Remote(Type I)	Circuit #1	110-120	1	60	1.38	59 2+G	Leads Single	20.00	1447	1340
				Remote(Type II)	Circuit #1	110-120	1	60	1.38	59 2+G	Leads Single	20.00	1620	1500
				Self-Contained	Circuit #1	110-120	1	60	9.86	778 2+G	5-15P or L5-15P	N/A	N/A	N/A
NE7227RSV	N/A	71.75	4.13	Remote(Type I)	Circuit #1	110-120	1	60	1.38	64 2+G	Leads Single	20.00	1706	1580
				Remote(Type II)	Circuit #1	110-120	1	60	1.38	64 2+G	Leads Single	20.00	1922	1780
				Self-Contained	Circuit #1	110-120	1	60	9.86	783 2+G	5-15P or L5-15P	N/A	N/A	N/A

*** Does not include electric defrost on freezer models.

Regulatory Approvals:

All Models	Accordance with AHRI Std 1200 ETL Listed to UL 471 ETL Listed to CAN/CSA 22.2 No. 120 ETL Sanitation to NSF 7
------------	--



In Accordance with
AHRI Std 1200

DOE 2017
Energy Efficiency
Compliant

Important Notes:

- 1) ELECTRICAL NOTE: If GFCI is required, a GFCI breaker MUST be used in lieu of a GFCI receptacle
- 2) Back side of counter must be open or vented the full length of the unit to allow proper ventilation for the refrigeration system.
- 3) A vent in the front of the counter recommended to help dissipate compressor heat.
- 4) Rear Access Standard - Counter must be configured to allow air to be drawn in the rear and discharged out the front.
- 5) Front Access Option - Counter must be configured to allow air to be drawn in the front and discharged out the rear.
- 6) Unit can intake and discharge from rear with optional rear vented panel.
- 7) 19.25" minimum space required beneath counter surface.
- 8) Glass warranty only applicable to first point of delivery.

⚠ WARNING: This product can expose you to chemicals, including Urethane (Ethyl Carbamate), which are known to the State of California to cause cancer and birth defects or other reproductive harm. For more information go to www.P65Warnings.ca.gov.