

Refrigerated Self-Service Slide In Counter Case



- ☐ NE3627RSSV
- ☐ NE4827RSSV
- ☐ NE6027RSSV
- ☐ NE7227RSSV

Lengths include end panels
35-3/4"L x 33"D x 27-7/8"H
47-3/4"L x 33"D x 27-7/8"H
59-3/4"L x 33"D x 27-7/8"H
71-3/4"L x 33"D x 27-7/8"H

STANDARD FEATURES

- NOTE: Glass warranty only applicable to first point of delivery
- Breeze~E (Type-II) w/ EnergyWise s/c refrigeration
- (2) Levels of clear glass shelving removable and adjustable on 1" centers
- Blue Fin coated coil
- Compressor air rear intake, front discharge
- Condensate pan (self-contained refrig. only)
- Integrated average product temperature of 40°F or less
- LED top & shelf lights
- NOTE: Overall case height is 47-1/8" (includes below counter)
- One piece formed ABS plastic tub
- One year parts & labor; 5 year compressor warranty
- Slide in base

Features	Standard	Options
EXTERIOR COLOR	<input type="checkbox"/> Black	<input type="checkbox"/> Painted (non-stock colors, specify RAL#) <input type="checkbox"/> Painted (stock colors, specify RAL#) <input type="checkbox"/> Stainless steel
INTERIOR COLOR	<input type="checkbox"/> Black	<input type="checkbox"/> NOTE: Interior color must be FDA & NSF approved <input type="checkbox"/> Painted (stock colors, specify RAL#) <input type="checkbox"/> Stainless steel
LEFT END GLASS	<input type="checkbox"/> Glass end	<input type="checkbox"/> No end glass w/ synchronized defrost
RIGHT END GLASS	<input type="checkbox"/> Glass end	<input type="checkbox"/> No end glass w/ synchronized defrost
UPPER REAR	<input type="checkbox"/> Solid back panel	<input type="checkbox"/> Clear glass rear sliding doors <input type="checkbox"/> Reflective glass rear sliding doors
LIGHTS	<input type="checkbox"/> LED 3500K w/ frosted lens	<input type="checkbox"/> LED 3000K w/ frosted lens <input type="checkbox"/> LED 4000K w/ frosted lens
ELECTRICAL CONNECT	<input type="checkbox"/> 6' Straight blade power cord (self-cont.)	<input type="checkbox"/> 6' Locking power cord (self-cont.) <input type="checkbox"/> Electrical leads (remote)
REAR VENTED PANEL	<input type="checkbox"/> None	<input type="checkbox"/> NOTE: Unit can intake & discharge from rear w/ optional rear vented panel <input type="checkbox"/> Painted (stock colors, specify RAL#) <input type="checkbox"/> Stainless steel
REFRIGERATION	<input type="checkbox"/> Breeze~E (Type-II) w/ EnergyWise s/c refrigeration (rear access)	<input type="checkbox"/> Breeze~E (Type-II) w/ EnergyWise s/c refrigeration (front access) (see important notes) <input type="checkbox"/> Remote w/thermostat, solenoid & TXV (front access) <input type="checkbox"/> Remote w/thermostat, solenoid & TXV (rear access)
MISCELLANEOUS		<input type="checkbox"/> Rear door lock <input type="checkbox"/> Second year parts & labor warranty (excludes compressor)
ACCESSORIES		<input type="checkbox"/> Clean Sweep® coil cleaner (n/a w/remote) <input type="checkbox"/> Clear acrylic security cover, removable, locking <input type="checkbox"/> Night curtain, retractable, non-locking

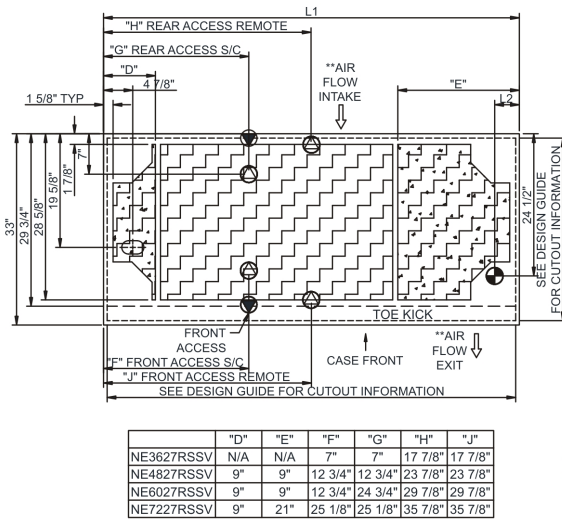
Reveal®

Product Specifications

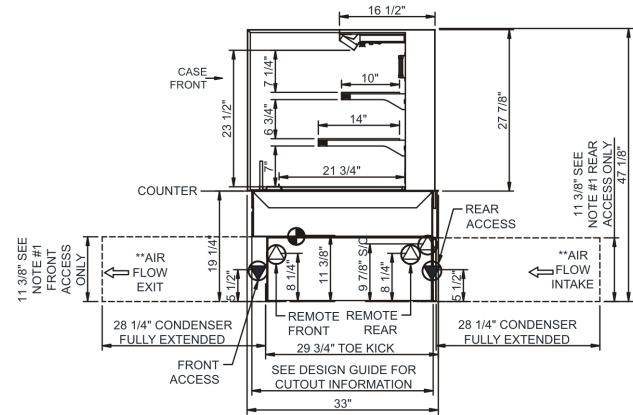
Intended Environment: Type II - Designed to operate in ambient conditions of 80°F and 60% relative humidity unless noted otherwise in system information below.

Zone	Intended Product To Be Displayed	Warmest Avg Prod Temp ° F
1	Packaged refrigerated products	40

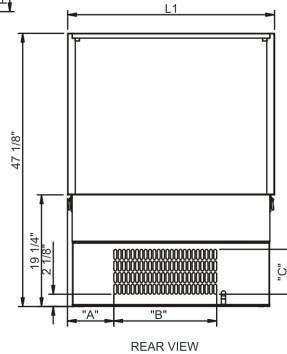
PLAN VIEW



SIDE VIEW



- NOTES:**
- 11 3/8\"
 - BACK OF COUNTER / CABINET MUST BE VENTED PROPERLY FOR ADEQUATE AIRFLOW TO CONDENSER.
 - **REPRESENTS REAR PULLOUT REFRIGERATION. AIR FLOW INTAKE AND EXIT DETAILS ARE REVERSED WITH FRONT PULLOUT REFRIGERATION OPTION.
 - SELF-CONTAINED ACCESS ONLY BY PULLING OUT CONDENSER UNIT.
 - SEE "COUNTER INSTALLATION GUIDE" FOR AIR FLOW REQUIREMENTS.



NOTE: ALL DIMENSIONS APPROXIMATE

- ELECTRICAL JUNCTION BOX**
(SUPPLIED WITH 6\"
- LOCATION OF DRAIN TUBE FOR REMOTE REF.**
ONLY (SUPPLIED WITH 3/4\"

- REFRIGERATION LINE CONNECTION.**
- REMOTE FLOOR SINK & UTILITIES ACCESS AREA.**

- SELF-CONTAINED CASE SERVICE ACCESS AREA.**
- DRY CASE SERVICE ACCESS AREA.**

Model Technical Specifications														
Model	L"	L1"	L2"	System Circuit Volts			Phs	Freq	Amps ***	Watts	Wires	NEMA Plug	SST	Conv. Rack BTUH
NE3627RSSV	N/A	35.75	4.13	Remote(Type I)	Circuit #1	110-120	1	60	1.05	36	2+G	Leads Single	20.00	2138
				Remote(Type II)	Circuit #1	110-120	1	60	1.05	36	2+G	Leads Single	20.00	2635
				Self-Contained	Circuit #1	110-120	1	60	16.00	1,183	2+G	5-20P or L5-20P	N/A	N/A
				Self-Contained	Circuit #1	110-120	1	60	16.00	1,209	2+G	5-20P or L5-20P	N/A	N/A
NE4827RSSV	N/A	47.75	4.13	Remote(Type I)	Circuit #1	110-120	1	60	1.56	76	2+G	Leads Single	20.00	2830
				Remote(Type II)	Circuit #1	110-120	1	60	1.56	76	2+G	Leads Single	20.00	3478
				Self-Contained	Circuit #1	110-120	1	60	16.00	1,209	2+G	5-20P or L5-20P	N/A	N/A
				Self-Contained	Circuit #1	110-120	1	60	16.00	1,218	2+G	5-20P or L5-20P	N/A	N/A
NE6027RSSV	N/A	59.75	4.13	Remote(Type I)	Circuit #1	110-120	1	60	1.60	85	2+G	Leads Single	20.00	3542
				Remote(Type II)	Circuit #1	110-120	1	60	1.60	85	2+G	Leads Single	20.00	4342
				Self-Contained	Circuit #1	110-120	1	60	16.00	1,218	2+G	5-20P or L5-20P	N/A	N/A
				Self-Contained	Circuit #1	110-120	1	60	16.00	1,218	2+G	5-20P or L5-20P	N/A	N/A
NE7227RSSV	N/A	71.75	4.13	Remote(Type I)	Circuit #1	110-120	1	60	1.64	96	2+G	Leads Single	20.00	4212
				Remote(Type II)	Circuit #1	110-120	1	60	1.64	96	2+G	Leads Single	20.00	5184
				Self-Contained	Circuit #1	208-240	1	60	9.90	1,372	2+G	6-15P or L6-15P	N/A	N/A
				Self-Contained	Circuit #1	208-240	1	60	9.90	1,372	2+G	6-15P or L6-15P	N/A	N/A

*** Does not include electric defrost on freezer models.

Regulatory Approvals:

All Models	<p>Accordance with AHRI Std 1200</p> <p>ETL Listed to UL 471</p> <p>ETL Listed to CAN/CSA 22.2 No. 120</p> <p>ETL Sanitation to NSF 7</p>
------------	---



In Accordance with
AHRI Std 1200

DOE 2017
Energy Efficiency
Compliant

Important Notes:

- 1) **ELECTRICAL NOTE:** If GFCI is required, a GFCI breaker MUST be used in lieu of a GFCI receptacle
- 2) Back side of counter must be open or vented the full length of the unit to allow proper ventilation for the refrigeration system.
- 3) A vent in the front of the counter recommended to help dissipate compressor heat.
- 4) Rear Access Standard - Counter must be configured to allow air to be drawn in the rear and discharged out the front.
- 5) Front Access Option - Counter must be configured to allow air to be drawn in the front and discharged out the rear.
- 6) Unit can intake and discharge from rear with optional rear vented panel.
- 7) 19.25" minimum space required beneath counter surface.
- 8) Glass warranty only applicable to first point of delivery.

⚠ WARNING: This product can expose you to chemicals, including Urethane (Ethyl Carbamate), which are known to the State of California to cause cancer and birth defects or other reproductive harm. For more information go to www.P65Warnings.ca.gov.