

Fusion

Product Specifications

ITEM NO: _____
PROJECT: _____
DATE: _____

Refrigerated Service Single Deck Case



MODEL SHOWN: GLDSV4R

- ☐ GLDSV3R
- ☐ GLDSV4R
- ☐ GLDSV6R

Lengths include 1-1/8" end panels
39"L x 47-7/8"D x 51-5/8"H
51"L x 47-7/8"D x 51-5/8"H
75-3/8"L x 47-7/8"D x 51-5/8"H

STANDARD FEATURES

- Breeze w/EnergyWise s/c refrigeration
- Compressor air intake from rear and out front panel at toe kick. Front panel cannot be blocked.
- Corrosion resistant stainless steel tub & fan shroud
- Integrated average product temperature of 40°F or less
- LED 4000K top light(s)
- One year parts & labor; 5 year compressor warranty
- Vertical, UV bonded lift-up front glass w/o lock

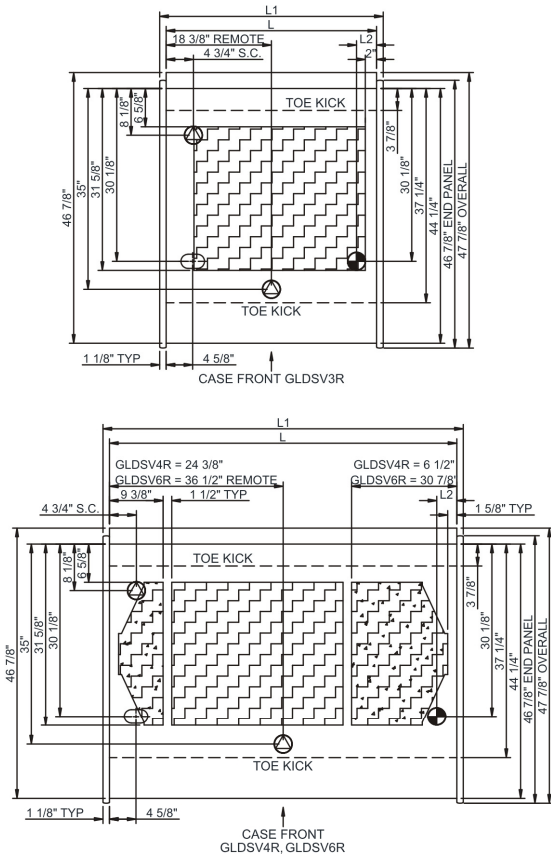
Features	Standard	Options
EXTERIOR COLOR	<input type="checkbox"/> Laminated (non-premium) Confirm pattern/grain direction	<input type="checkbox"/> Laminated (premium) Confirm pattern/grain direction <input type="checkbox"/> Painted (stock colors, specify RAL#) <input type="checkbox"/> Stainless steel
INTERIOR COLOR	<input type="checkbox"/> Black	<input type="checkbox"/> Stainless steel
LOWER FRONT PANEL COLOR	<input type="checkbox"/> Painted - Black	<input type="checkbox"/> Stainless steel
REAR EXTERIOR COLOR	<input type="checkbox"/> Stainless steel rear exterior	<input type="checkbox"/> Painted - Black <input type="checkbox"/> Painted - White
TRIM COLOR	<input type="checkbox"/> Black	<input type="checkbox"/> Silver
BASE	<input type="checkbox"/> Casters w/ levelers	<input type="checkbox"/> 6"H legs (n/a w/ remote ref.) <input type="checkbox"/> Rail system for shims (n/a w/ s/c ref.)
END PANEL LEFT	<input type="checkbox"/> Full end panel w/mirror interior	<input type="checkbox"/> Cutaway w/ glass <input type="checkbox"/> No end panel w/ synchronized defrost
END PANEL RIGHT	<input type="checkbox"/> Full end panel w/mirror interior	<input type="checkbox"/> Cutaway w/ glass <input type="checkbox"/> No end panel w/ synchronized defrost
REAR WORK LEDGE	<input type="checkbox"/> Black Sanalite®	<input type="checkbox"/> Solid surface (specify color) <input type="checkbox"/> Stainless steel <input type="checkbox"/> White Sanalite®
UPPER REAR	<input type="checkbox"/> Acrylic rear sliding doors w/o lock	<input type="checkbox"/> Open
ELECTRICAL CONNECT	<input type="checkbox"/> 6' Straight blade power cord (self-cont.)	<input type="checkbox"/> 6' Locking power cord (self-cont.) <input type="checkbox"/> Electrical leads (remote)
REFRIGERATION	<input type="checkbox"/> Breeze w/EnergyWise s/c refrigeration	<input type="checkbox"/> NOTE: Remote only available w/rail base w/shims. N/A w/ levelers, casters or legs. <input type="checkbox"/> Note: Remote doesn't incl Conds unit. Floor drain reqd. <input type="checkbox"/> Remote w/thermostat, solenoid & TXV
MISCELLANEOUS		<input type="checkbox"/> Front glass lock <input type="checkbox"/> Rear door lock <input type="checkbox"/> Scale stand w/receptacle (requires separate circuit) <input type="checkbox"/> Second year parts & labor warranty (excludes compressor)
ACCESSORIES		<input type="checkbox"/> 2"H Full depth display riser(s) <input type="checkbox"/> Clean Sweep® coil cleaner (n/a w/remote) <input type="checkbox"/> Stainless steel condiment rail system

Fusion

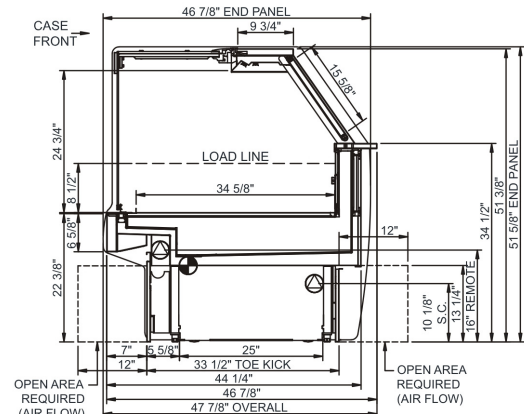
Product Specifications

Intended Environment: Type I - Designed to operate in ambient conditions of 75°F with 55% relative humidity unless noted otherwise in system information below.		
Zone	Intended Product To Be Displayed	Warmest Avg Prod Temp ° F
1	Unpackaged refrigerated products	38-40

PLAN VIEW



SIDE VIEW



NOTE: ALL DIMENSIONS APPROXIMATE

- ELECTRICAL JUNCTION BOX (SUPPLIED WITH 6" LEADS OR POWER CORD).
- REMOTE FLOOR SINK & UTILITIES ACCESS AREA.
- LOCATION OF DRAIN TUBE FOR REMOTE REF. ONLY (SUPPLIED WITH 3/4" OR 1 1/2" PVC TUBE).
- SELF-CONTAINED CASE SERVICE ACCESS AREA.
- REFRIGERATION LINE CONNECTION.
- DRY CASE SERVICE ACCESS AREA.

Model Technical Specifications																
Model	L"	L1"	L2"	System Circuit Volts			Phs	Freq	Amps ***	Watts	Wires	NEMA Plug	SST	Conv. Rack BTUH	Para. Rack BTUH	Est Wt
GLDSV3R	36.75	39.00	3.50	Remote(Type I)	Circuit #1	110-120	1	60	1.70	22	2+G	Leads Multiple	20.00	929	860	950
				Self-Contained	Circuit #1	110-120	1	60	6.20	562	2+G	5-15P or L5-15P	N/A	N/A	N/A	
GLDSV4R	48.75	51.00	3.50	Remote(Type I)	Circuit #1	110-120	1	60	1.53	106	2+G	Leads Multiple	20.00	1179	1092	1,050
				Remote(Type I)	Circuit #1	110-120	1	60	1.53	106	2+G	Leads Multiple	20.00	1179	1092	
GLDSV6R	73.13	75.38	3.50	Self-Contained	Circuit #1	110-120	1	60	10.06	758	2+G	5-20P or L5-20P	N/A	N/A	N/A	1,250
				Remote(Type I)	Circuit #1	110-120	1	60	2.29	82	2+G	Leads Multiple	20.00	1771	1640	
				Remote(Type I)	Circuit #1	110-120	1	60	2.29	82	2+G	Leads Multiple	-	1771	1640	
				Self-Contained	Circuit #1	110-120	1	60	14.91	1,045	2+G	5-20P or L5-20P	N/A	N/A	N/A	

*** Does not include electric defrost on freezer models.

Regulatory Approvals:	
All Models	Accordance with AHRI Std 1200 ETL Listed to UL 471 ETL Listed to CAN/CSA 22.2 No. 120 ETL Sanitation to NSF 7



Important Notes:

- ELECTRICAL NOTE:** If GFCI is required, a GFCI breaker MUST be used in lieu of a GFCI receptacle
 - Units are supplied with levelers. They must be adjusted during installation to ensure the unit is level and plumb.
- Dimensions reflect levelers extended 1 1/4"
- WARNING:** This product can expose you to chemicals, including Urethane (Ethyl Carbamate), which are known to the State of California to cause cancer and birth defects or other reproductive harm. For more information go to www.P65Warnings.ca.gov.