

### Refrigerated Self-Service Island

Lengths include end panels  
 80-3/4"L x 48-1/8"D x 63"H  
 99-3/4"L x 48-1/8"D x 63"H

- FSI663R
- FSI863R



MODEL SHOWN: FSI863R

Conforms to NSF STD 7  
**TYPE II**

#### STANDARD FEATURES

- Breeze~E (Type-II) w/ EnergyWise s/c refrigeration
- Compressor air intake in one side & out other side. All louvered panels cannot be blocked
- Integrated average product temperature of 40°F or less
- LED 4000K top light(s)
- One year parts & labor; 5 year compressor warranty
- Price tag molding (matches interior color)
- Removable deck pans provide complete access to evaporator coil & refrigeration connections
- Vinyl T-edge (matches interior color)

Features	Standard	Options
<b>EXTERIOR COLOR</b>	<input type="checkbox"/> Laminated (non-premium) Confirm pattern/grain direction	<input type="checkbox"/> For all other manufacturer's laminates not Wilsonart® or Formica® <input type="checkbox"/> Laminated (premium) Confirm pattern/grain direction <input type="checkbox"/> Stainless steel (includes lower front panel)
<b>INTERIOR COLOR</b>	<input type="checkbox"/> Black	<input type="checkbox"/> Stainless steel
<b>LOWER FRONT PANEL COLOR</b>	<input type="checkbox"/> Black	<input type="checkbox"/> Stainless steel (w/stainless ext. only)
<b>BASE SUPPORT</b>	<input type="checkbox"/> Levelers	<input type="checkbox"/> Inline casters (n/a with remote)
<b>SHELVING</b>	<input type="checkbox"/> Non-adjustable metal shelves, non-lighted	<input type="checkbox"/> Non-adjustable metal shelves, lighted (LED 4000K)
<b>ELECTRICAL CONNECT</b>	<input type="checkbox"/> 6' Straight blade power cord (self-cont.)	<input type="checkbox"/> 6' Locking power cord (self-cont.) <input type="checkbox"/> Electrical leads (remote)
<b>REFRIGERATION</b>	<input type="checkbox"/> Breeze~E (Type-II) w/ EnergyWise s/c refrigeration	<input type="checkbox"/> Note: Remote doesn't incl Conds unit. Floor drain reqd. <input type="checkbox"/> Remote w/thermostat, solenoid & TXV
<b>MISCELLANEOUS</b>		<input type="checkbox"/> Second year parts & labor warranty (excludes compressor)

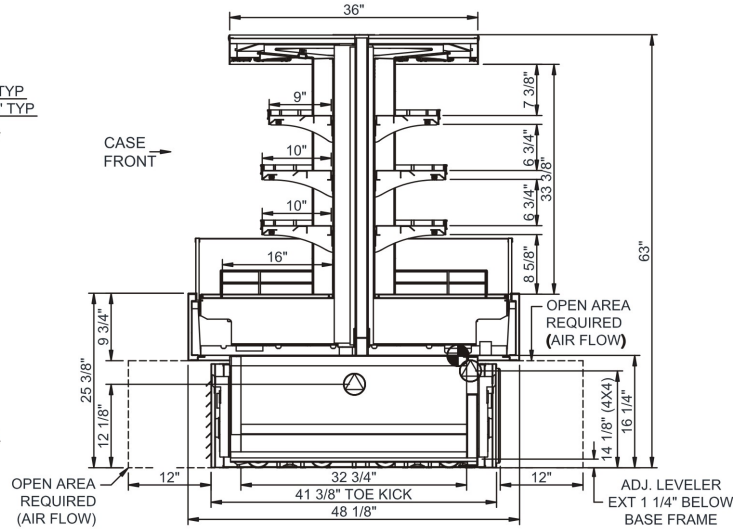
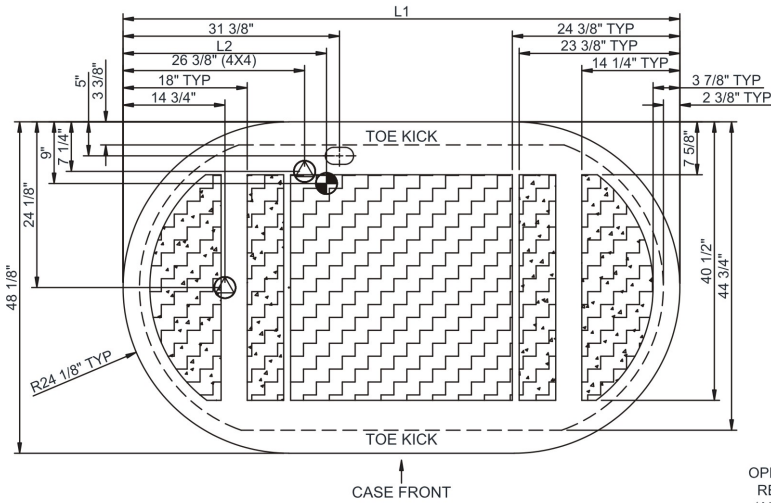
# Oasis®

## Product Specifications

<b>Intended Environment:</b> Type II - Designed to operate in ambient conditions of 80°F and 60% relative humidity unless noted otherwise in system information below.	
<b>Zone</b>	<b>Intended Product To Be Displayed</b>
1	Packaged refrigerated products
<b>Warmest Avg Prod Temp ° F</b>	
40	

PLAN VIEW

SIDE VIEW



NOTE: ALL DIMENSIONS APPROXIMATE

- ELECTRICAL JUNCTION BOX (SUPPLIED WITH 6" LEADS OR POWER CORD).
- REFRIGERATION LINE CONNECTION.
- SELF-CONTAINED CASE SERVICE ACCESS AREA.
- LOCATION OF DRAIN TUBE FOR REMOTE REF. ONLY (SUPPLIED WITH 3/4" OR 1 1/2" PVC TUBE).
- REMOTE FLOOR SINK & UTILITIES ACCESS AREA.
- DRY CASE SERVICE ACCESS AREA.

### Model Technical Specifications

Model	L"	L1"	L2"	System Circuit Volts		Phs	Freq	Amps ***	Watts	Wires	NEMA Plug	SST	Conv. Rack BTUH	Para. Rack BTUH	Est Wt	
FSI663R	N/A	80.75	32.75	Remote(Type II)	Circuit #1	110-120	1	60	5.45	425	2+G	Leads Multiple	20.00	13478	12480	1,250
				Self-Contained	Circuit #1	208-240	1	60	22.78	3,063	2+G	6-30P	N/A	N/A	N/A	
FSI863R	N/A	99.75	39.88	Remote(Type II)	Circuit #1	110-120	1	60	8.57	548	2+G	Leads Multiple	20.00	19440	18000	1,600
				Self-Contained	Circuit #1	208-240	1	60	24.00	3,249	2+G	6-30P or L6-30P	N/A	N/A	N/A	

\*\*\* Does not include electric defrost on freezer models.

#### Important Notes:

- 1) ELECTRICAL NOTE: If GFCI is required, a GFCI breaker MUST be used in lieu of a GFCI receptacle
  - 2) NOTE: Electrical specs reflect highest Amp draw using lighted shelves option
- ⚠ WARNING:** This product can expose you to chemicals, including Urethane (Ethyl Carbamate), which are known to the State of California to cause cancer and birth defects or other reproductive harm. For more information go to [www.P65Warnings.ca.gov](http://www.P65Warnings.ca.gov).

Regulatory Approvals:	
All Models	Accordance with AHRI Std 1200 ETL Listed to UL 471 ETL Listed to CAN/CSA 22.2 No. 120 ETL Sanitation to NSF 7



In Accordance with  
**AHRI Std 1200**

**DOE 2017**  
Energy Efficiency  
Compliant