

Product Specifications

Refrigerated Self-Service Counter Case



MODEL SHOWN: CO4324R-UC-E3

NOTE: SHOWN BEHIND CUSTOMER SUPPLIED COUNTER



- | | |
|--|-----------------------------------|
| | Lengths include end panels |
| <input type="checkbox"/> CO3324R-UC-E3 | 36-1/4"L x 24-1/8"D x 32-3/4"H |
| <input type="checkbox"/> CO4324R-UC-E3 | 47-1/4"L x 24-1/8"D x 32-3/4"H |
| <input type="checkbox"/> CO5324R-UC-E3 | 59-1/4"L x 24-1/8"D x 32-3/4"H |
| <input type="checkbox"/> CO6324R-UC-E3 | 71-1/4"L x 24-1/8"D x 32-3/4"H |

STANDARD FEATURES

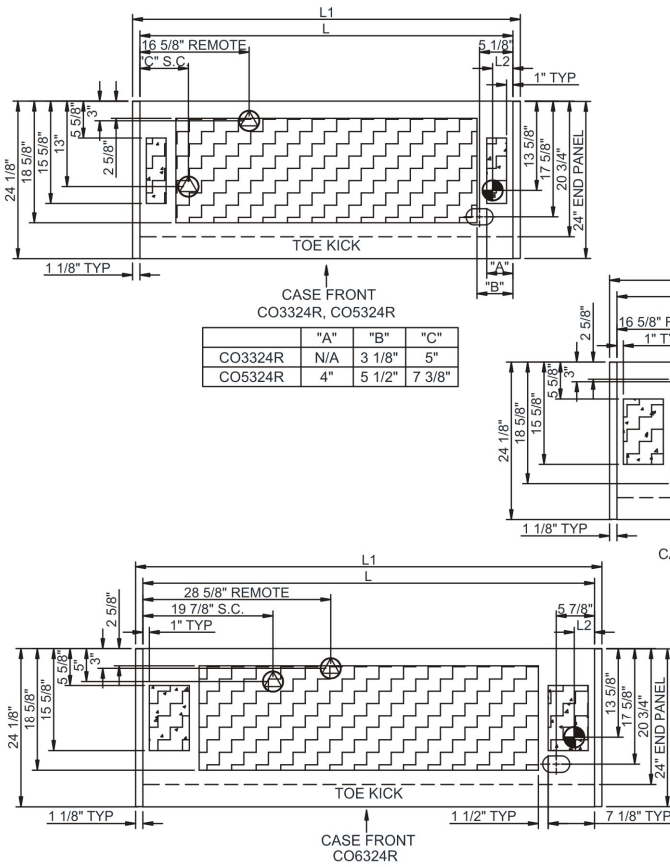
- NOTE: ADD SUFFIX TO MODEL # LISTED ABOVE BASED ON MODEL CONFIGURATION CHOSEN BELOW
- Breeze~E (Type-II) w/ EnergyWise s/c refrigeration (rear access)
- Blue Fin coated coil
- Casters (non-locking) w/ levelers
- Compressor air rear intake, front discharge at toe kick. Front and rear panels cannot be blocked. Must remain 4" from wall
- Condensate pan (self-contained refig. only)
- Flat front panel
- Integrated average product temperature of 40°F or less
- LED 3500K top light(s)
- One piece formed ABS plastic tub
- One year parts & labor; 5 year compressor warranty
- Removable deck pans provide complete access to evaporator coil & refrigeration connections
- Toe kick, black

Features	Standard	Options
MODEL CONFIGURATION	<input type="checkbox"/> Undercounter height (-UC) Undercounter ht. 32-3/4"H; front panel extends over end panels to blend w/adj. counters (supplied by others). Counter surface (supplied by others) extends over top of unit	
EXTERIOR COLOR	<input type="checkbox"/> Black	
INTERIOR COLOR	<input type="checkbox"/> Black	
END PANEL LEFT	<input type="checkbox"/> Square full end panel w/mirror	
END PANEL RIGHT	<input type="checkbox"/> Square full end panel w/mirror	
EXTERIOR BACK PANEL	<input type="checkbox"/> Solid back panel, black	
ELECTRICAL CONNECT	<input type="checkbox"/> 6' Straight blade power cord (self-cont.)	
REFRIGERATION	<input type="checkbox"/> Breeze~E (Type-II) w/ EnergyWise s/c refrigeration (rear access)	
MISCELLANEOUS		<input type="checkbox"/> Second year parts & labor warranty (excludes compressor)

Product Specifications

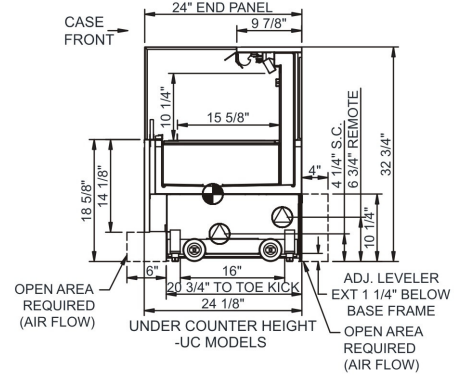
Intended Environment: Type II - Designed to operate in ambient conditions of 80°F and 60% relative humidity unless noted otherwise in system information below.		Warmest Avg Prod Temp ° F
Zone	Intended Product To Be Displayed	
1	Packaged refrigerated products	40

PLAN VIEW



CASE FRONT	"A"	"B"	"C"
CO3324R	N/A	3 1/8"	5"
CO5324R	4"	5 1/2"	7 3/8"

SIDE VIEW



NOTE: ALL DIMENSIONS APPROXIMATE

- ELECTRICAL JUNCTION BOX (SUPPLIED WITH 6\"/> LEADS OR POWER CORD).
- REMOTE FLOOR SINK & UTILITIES ACCESS AREA.
- LOCATION OF DRAIN TUBE FOR REMOTE REF. ONLY (SUPPLIED WITH 3/4\"/> OR 1 1/2\"/> PVC TUBE).
- SELF-CONTAINED CASE SERVICE ACCESS AREA.
- REFRIGERATION LINE CONNECTION.
- DRY CASE SERVICE ACCESS AREA.

Model Technical Specifications

Model	L"	L1"	L2"	System	Circuit Volts	Phs	Freq	Amps ***	Watts	Wires	NEMA Plug	SST	Conv. Rack BTUH	Para. Rack BTUH	Est Wt
CO3324R-UC-E3	N/A	36.25	2.50	Self-Contained	Circuit #1	110-120	1	60	12.00	1,050	2+G	N/A	N/A	N/A	500
CO4324R-UC-E3	N/A	47.25	3.13	Self-Contained	Circuit #1	110-120	1	60	12.00	1,053	2+G	N/A	N/A	N/A	600
CO5324R-UC-E3	N/A	59.25	3.13	Self-Contained	Circuit #1	110-120	1	60	16.00	1,204	2+G	N/A	N/A	N/A	700
CO6324R-UC-E3	N/A	71.25	3.13	Self-Contained	Circuit #1	110-120	1	60	16.00	1,211	2+G	N/A	N/A	N/A	1,000

*** Does not include electric defrost on freezer models.

Important Notes:

- 1) ELECTRICAL NOTE: If GFCI is required, a GFCI breaker MUST be used in lieu of a GFCI receptacle
- 2) 33" Minimum entry door clearance required (w/out shipping skid)
- 3) Performance issues (product temperatures, water on floor, etc.) caused by adverse conditions are not covered by warranty.
- 4) Keep unit at least 15' from exterior doors, overhead HVAC vents, or any air curtain disruption.
- 5) Do not expose unit to direct sunlight or any heat source (ovens, fryers, etc.).

⚠ WARNING: This product can expose you to chemicals, including Urethane (Ethyl Carbamate), which are known to the State of California to cause cancer and birth defects or other reproductive harm. For more information go to www.P65Warnings.ca.gov.

Regulatory Approvals:

All Models	Accordance with AHR Std 1200 ETL Listed to UL 471 ETL Listed to CAN/CSA 22.2 No. 120 ETL Sanitation to NSF 7
------------	---



In Accordance with
AHRI Std 1200

DOE 2017
Energy Efficiency
Compliant