



KoldFront Program



Specifications:

Interior/Exterior Finish: 26 Ga Embossed Galvalume

Door: 34x78, standard hardware package with dial thermometer - includes interior & exterior diamond tread kick plates

Insulation: 4" 100% foam-in-place polyurethane

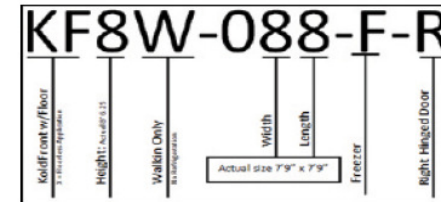
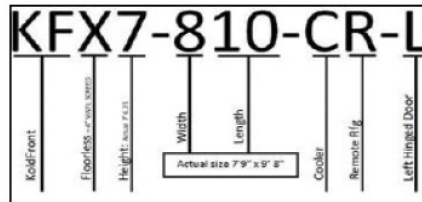
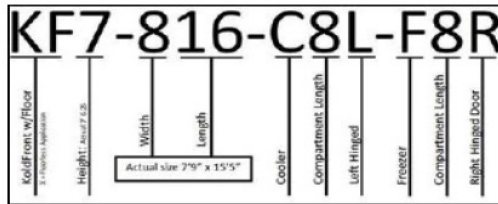
Floored Application: Era .100 Smooth Aluminum - actual height 7' 6.25"

Floorless Application: 4" Vinyl Screed - actual height 7' 6.25"

Outdoor units must be quoted by factory and is not available for 5 day shipping

Refrigeration: PC Scroll Remote 208-230/60/1, Freezer Evap 208-230/60/1, Cooler Evap 115/60/1

Model Nomenclature:

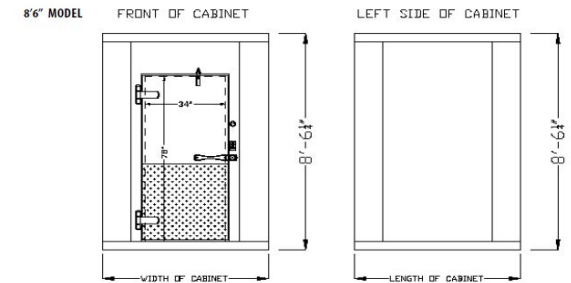
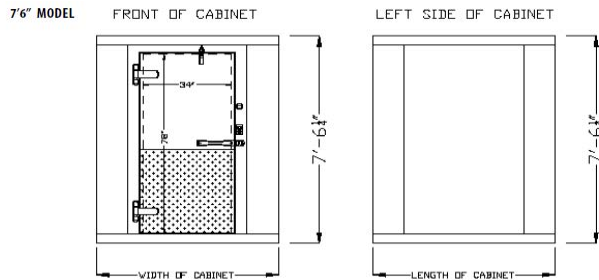


Key: ● Standard ○ Optional

	Cooler	Freezer		Cooler	Freezer
Air cooled condensing units	●	●	Interior LED light	●	●
Defrost timer	●	●	Keyed door locks	●	●
Dial thermometer	●	●	Low ambient controls	●	●
Door heater	●	●	Magnetic door gaskets	●	●
Electric coil defrost system (Indoor units)	●	●	NSF panels	●	●
Expansion valve systems	●	●	Timed Off coil defrost system	●	●
Chicago Relief Valve	○	○	Self closing door	●	●
Headmaster	○	○	UL door section	●	●
100% Foamed-in-place polyurethane insulation (4")	●	●	UL panels (fire rated)	●	●
Foamed in place panel gaskets	●	●	1 year parts warranty	●	●
Galvalume interior and exterior	●	●	10 year panel warranty	○	○
High pressure safety control	●	●	5 year compressor warranty -option	○	○
Holding only refrigeration systems	●	●	1 year labor warranty	○	○
Inside safety release	●	●	24" wide door opening	●	●
Interior ERA .100" aluminum floor	●	●	Oregon Seal	●	●
Interior Kick Plate	●	●	Seismic Zone Kit	○	○
Strip Curtain	●	●	Exterior Ramp	○	○
Scroll Compressors	●	●	1809 Light	○	○
			Trim 8" each	○	○

Outdoor Package Requirements:

Outdoor units must be quoted by factory and are not available for the 5 day Rapid Ship Program.



NOTE:
Remote refrigeration evaporators require a drain line supplied by others.
Specifications subject to change without notice.

8' KoldFront Coolers & Freezers

Coolers: 38°F - 8'-6-1/4" High

<u>With Floor</u>	<u>Model</u>	<u>Actual Size</u>	<u>Capacity</u>	<u>Condenser Unit</u>	<u>Electrical</u>	<u>Amps</u>	<u>Evaporator Coil</u>	<u>Electrical</u>	<u>Fan Amps</u>	<u>Htr Amps</u>	<u>Ship Weight</u>
6x8x8	KF8-068-CR	5'10"x 7'9"	286 cu. ft.	KPC48MOP	208-230/60/1	5.7	KAM16-052-EC-PR-8	115/60/1	0.8	N/A	1169
6x10x8	KF8-0610-CR	5'10"x 9'8"	357 cu. ft.	KPC48MOP	208-230/60/1	5.7	KAM16-052-1EC-PR-8	115/60/1	0.8	N/A	1368
6x12x8	KF8-0612-CR	5'10"x 11'7"	428 cu. ft.	KPC68MZOP	208-230/60/1	17	KAM26-073-EC-PR-8	115/60/1	0.8	N/A	1524
8x6x8	KF8-086-CR	7'9" x 5'10"	286 cu. ft.	KPC48MOP	208-230/60/1	5.7	KAM16-052-EC-PR-8	115/60/1	0.8	N/A	1169
8x8x8	KF8-088-CR	7'9" x 7'9"	381 cu. ft.	KPC48MOP	208-230/60/1	5.7	KAM16-052-1EC-PR-8	115/60/1	0.8	N/A	1391
8x10x8	KF8-0810-CR	7'9" x 9'8"	476 cu. ft.	KPC68MZOP	208-230/60/1	17	KAM26-073-EC-PR-8	115/60/1	0.8	N/A	1573
8x12x8	KF8-0812-CR	7'9" x 11'7"	571 cu. ft.	KPC68MZOP	208-230/60/1	17	KAM26-073-EC-PR-8	115/60/1	0.8	N/A	1762
8x14x8	KF8-0814-CR	7'9" x 13'6"	665 cu.ft.	KPC68MZOP	208-230/60/1	17	KAM26-073-1EC-PR-8	115/60/1	0.8	N/A	1951
10x6x8	KF8-106-CR	9'8" x 5'10"	357 cu. ft.	KPC48MOP	208-230/60/1	5.7	KAM16-052-1EC-PR-8	115/60/1	0.8	N/A	1368
10x8x8	KF8-108-CR	9'8" x 7'9"	476 cu. ft.	KPC68MZOP	208-230/60/1	17	KAM26-073-1EC-PR-8	115/60/1	0.8	N/A	1573
10x10x8	KF8-1010-CR	9'8" x 9'8"	595 cu.ft.	KPC68MZOP	208-230/60/1	17	KAM26-073-1EC-PR-8	115/60/1	0.8	N/A	1790
10x12x8	KF8-1012-CR	9'8" x 11'7"	714 cu. ft.	KPC68MZOP	208-230/60/1	17	KAM26-073-1EC-PR-8	115/60/1	0.8	N/A	2040
10x14x8	KF8-1014-CR	9'8" x 13' 6"	833 cu. ft.	KPC98MZOP	208-230/60/1	11.4	KAM26-094-1EC-PR-8	115/60/1	1.6	N/A	2325
12x6x8	KF8-126-CR	11'7" x 5'10"	428 cu. ft.	KPC68MZOP	208-230/60/1	17	KAM26-073-EC-PR-8	115/60/1	0.8	N/A	1524
12x8x8	KF8-128-CR	11'7" x 7'9"	571 cu. ft.	KPC68MZOP	208-230/60/1	17	KAM26-073-EC-PR-8	115/60/1	0.8	N/A	1762
12x10x8	KF8-1210-CR	11'7" x 9'8"	714 cu. ft.	KPC68MZOP	208-230/60/1	17	KAM26-073-1EC-PR-8	115/60/1	0.8	N/A	2040
12x12x8	KF8-1212-CR	11'7" x 11'7"	857 cu. ft.	KPC98MZOP	208-230/60/1	11.4	KAM26-094-1EC-PR-8	115/60/1	1.6	N/A	2325
12x14x8	KF8-1214-CR	11'7" x 13'6"	1000 cu. ft.	KPC98MZOP	208-230/60/1	11.4	KAM26-094-1EC-PR-8	115/60/1	0.8	N/A	2650
14x8x8	KF8-1408-CR	13'6"x7'9"	665 cu.ft.	KPC68MZOP	208-230/60/1	17	KAM26-073-1EC-PR-8	115/60/1	0.8	N/A	1951
14x10x8	KF8-1410-CR	13' 6" x 9'8"	833 cu. ft.	KPC68MZOP	208-230/60/1	17	KAM26-073-1EC-PR-8	115/60/1	0.8	N/A	2325
14x12x8	KF8-1412-CR	13'6" x 11'7"	1000 cu. ft.	KPC98MZOP	208-230/60/1	11.4	KAM26-094-1EC-PR-8	115/60/1	0.8	N/A	2650

Freezers -10°F - 8'-6-1/4" High

<u>With Floor</u>	<u>Model</u>	<u>Actual Size</u>	<u>Capacity</u>	<u>Condenser Unit</u>	<u>Electrical</u>	<u>Amps</u>	<u>Evaporator Coil</u>	<u>Electrical</u>	<u>Fan Amps</u>	<u>Htr Amps</u>	<u>Ship Weight</u>
6x8x8	KF8-068-FR	5'10"x 7'9"	286 cu. ft.	KPC198LZOP	208-230/60/1	15.1	KEL16-049-2EC-PR-8	208-230/60/1	0.5	4.9	1269
6x10x8	KF8-0610-FR	5'10"x 9'8"	357 cu. ft.	KPC198LZOP	208-230/60/1	15.1	KEL16-049-2EC-PR-8	208-230/60/1	0.5	4.9	1433
6x12x8	KF8-0612-FR	5'10"x 11'7"	428 cu. ft.	KPC248LZOP	208-230/60/1	19.1	KEL26-066-2EC-PR-8	208-230/60/1	1	9.8	1524
8x6x8	KF8-086-FR	7'9" x 5'10"	286 cu. ft.	KPC198LZOP	208-230/60/1	15.1	KEL16-049-2EC-PR-8	208-230/60/1	0.5	4.9	1269
8x8x8	KF8-088-FR	7'9" x 7'9"	381 cu. ft.	KPC248LZOP	208-230/60/1	19.1	KEL26-066-2EC-PR-8	208-230/60/1	1	9.8	1456
8x10x8	KF8-0810-FR	7'9" x 9'8"	476 cu. ft.	KPC248LZOP	208-230/60/1	19.1	KEL26-066-2EC-PR-8	208-230/60/1	1	9.8	1573
8x12x8	KF8-0812-FR	7'9" x 11'7"	571 cu. ft.	KPC248LZOP	208-230/60/1	19.1	KEL26-066-2EC-PR-8	208-230/60/1	1	9.8	1762
10x6x8	KF8-106-FR	9'8" x 5'10"	357 cu. ft.	KPC198LZOP	208-230/60/1	15.1	KEL16-049-2EC-PR-8	208-230/60/1	0.5	4.9	1433
10x8x8	KF8-108-FR	9'8" x 7'9"	476 cu. ft.	KPC248LZOP	208-230/60/1	19.1	KEL26-066-2EC-PR-8	208-230/60/1	1	9.8	1638
10x10x8	KF8-1010-FR	9'8" x 9'8"	595 cu.ft.	KPC248LZOP	208-230/60/1	19.1	KEL26-066-2EC-PR8	208-230/60/1	1	9.8	1790
12x6x8	KF8-126-FR	11'7" x 5'10"	428 cu. ft.	KPC248LZOP	208-230/60/1	19.1	KEL26-066-2EC-PR-8	208-230/60/1	1	9.8	1524
12x8x8	KF8-128-FR	11'7" x 7'9"	571 cu. ft.	KPC248LZOP	208-230/60/1	19.1	KEL26-066-2EC-PR-8	208-230/60/1	1	9.8	1762

8' KoldFront Coolers & Freezers

Coolers: 38°F - 8'-6-1/4" High

<u>Floorless</u>	<u>Model</u>	<u>Actual Size</u>	<u>Capacity</u>	<u>Condenser Unit</u>	<u>Electrical</u>	<u>Amps</u>	<u>Evaporator Coil</u>	<u>Electrical</u>	<u>Fan Amps</u>	<u>Htr Amps</u>	<u>Ship Weight</u>
6x8x8	KFX8-068-CR	5'10"x 7'9"	286 cu. ft.	KPC48MOP	208-230/60/1	5.7	KAM16-052-EC-PR-8	115/60/1	0.8	N/A	977
6x10x8	KFX8-0610-CR	5'10"x 9'8"	357 cu. ft.	KPC48MOP	208-230/60/1	5.7	KAM16-052-1EC-PR-8	115/60/1	0.8	N/A	1128
6x12x8	KFX8-0612-CR	5'10"x 11'7"	428 cu. ft.	KPC68MZOP	208-230/60/1	17	KAM26-073-EC-PR-8	115/60/1	0.8	N/A	1236
8x6x8	KFX8-086-CR	7'9" x 5'10"	286 cu. ft.	KPC48MOP	208-230/60/1	5.7	KAM16-052-EC-PR-8	115/60/1	0.8	N/A	977
8x8x8	KFX8-088-CR	7'9" x 7'9"	381 cu. ft.	KPC68MZOP	208-230/60/1	17	KAM26-073-EC-PR-8	115/60/1	0.8	N/A	1135
8x10x8	KFX8-0810-CR	7'9" x 9'8"	476 cu. ft.	KPC68MZOP	208-230/60/1	17	KAM26-073-1EC-PR-8	115/60/1	0.8	N/A	1253
8x12x8	KFX8-0812-CR	7'9" x 11'7"	571 cu. ft.	KPC68MZOP	208-230/60/1	17	KAM26-073-1EC-PR-8	115/60/1	0.8	N/A	1346
8x14x8	KFX8-814-CR	7'9" x 13' 6"	665 cu.ft.	KPC98MZOP	208-230/60/1	11.4	KAM26-094-1EC-PR-8	115/60/1	0.8	N/A	1951
10x6x8	KFX8-106-CR	9'8" x 5'10"	357 cu. ft.	KPC48MOP	208-230/60/1	5.7	KAM16-052-1EC-PR-8	115/60/1	0.8	N/A	1128
10x8x8	KFX8-108-CR	9'8" x 7'9"	476 cu. ft.	KPC68MZOP	208-230/60/1	17	KAM26-073-1EC-PR-8	115/60/1	0.8	N/A	1253
10x10x8	KFX8-1010-CR	9'8" x 9'8"	595 cu.ft.	KPC68MZOP	208-230/60/1	17	KAM26-073-1EC-PR-8	115/60/1	0.8	N/A	1442
10x12x8	KFX8-1012-CR	9'8" x 11'7"	714 cu. ft.	KPC68MZOP	208-230/60/1	17	KAM26-073-1EC-PR-8	115/60/1	0.8	N/A	1600
10x14x8	KFX8-1014-CR	9'8" x 13' 6"	833 cu. ft.	KPC98MZOP	208-230/60/1	11.4	KAM26-094-1EC-PR-8	115/60/1	0.8	N/A	1777
12x6x8	KFX8-126-CR	11'7" x 5'10"	428 cu. ft.	KPC68MZOP	208-230/60/1	17	KAM26-073-EC-PR-8	115/60/1	0.8	N/A	1236
12x8x8	KFX8-128-CR	11'7" x 7'9"	571 cu. ft.	KPC68MZOP	208-230/60/1	17	KAM26-073-1EC-PR-8	115/60/1	0.8	N/A	1346
12x10x8	KFX8-1210-CR	11'7" x 9'8"	714 cu. ft.	KPC98MZOP	208-230/60/1	11.4	KAM26-094-1EC-PR-8	115/60/1	1.6	N/A	1467
12x12x8	KFX8-1212-CR	11'7" x 11'7"	857 cu. ft.	KPC98MZOP	208-230/60/1	11.4	KAM26-094-1EC-PR-8	115/60/1	0.8	N/A	1625
12x14x8	KFX8-1214-CR	11'7" x 13'6"	1000 cu. ft.	KPC148MZOP	208-230/60/1	13.4	KAM26-130-1EC-PR-8	115/60/1	1.6	N/A	1780
14x8x8	KFX8-1408-CR	13'6"x7'9"	665 cu.ft.	KPC98MZOP	208-230/60/1	11.4	KAM26-094-1EC-PR-8	115/60/1	1.6	N/A	1951
14x10x8	KFX8-1410-CR	13' 6" x 9'8"	833 cu. ft.	KPC98MZOP	208-230/60/1	11.4	KAM26-094-1EC-PR-8	115/60/1	0.8	N/A	1777
14x12x8	KFX8-1412-CR	13'6" x 11'7"	1000 cu. ft.	KPC148MZOP	208-230/60/1	13.4	KAM26-130-1EC-PR-8	115/60/1	1.6	N/A	1940

Combos: Coolers: 38°F & Freezers: 10°F - 7'-6-1/4" High

<u>With Floor</u>	<u>Remote</u>	<u>Actual Size</u>	<u>Cooler Refrigeration</u>	<u>Freezer Refrigeration</u>	<u>Ship Weight</u>
8x16x7	KF7-816-C8-F8	7'9x15'5"	KPC48MOP KAM16-052-1EC-PR-8	KPC198LZOP KEL16-049-2EC-PR-8	2847
8x18x7	KF7-818-C8-F10	7'9x17'4"	KPC48MOP KAM16-052-1EC-PR-8	KPC248LZOP KEL26-066-2EC-PR-8	2964
8x18x7	KF7-818-C10-F8	7'9x17'4"	KPC48MOP KAM16-052-1EC-PR-8	KPC198LZOP KEL16-049-2EC-PR-8	3029
8x20x7	KF7-820-C8-F12	7'9x19'3"	KPC48MOP KAM16-052-1EC-PR-8	KPC248LZOP KEL26-066-2EC-PR-8	3153
8x20x7	KF7-820-C10-F10	7'9x19'3"	KPC48MOP KAM16-052-1EC-PR-8	KPC248LZOP KEL26-066-2EC-PR-8	3146
8x20x7	KF7-820-C12-F8	7'9x19'3"	KPC68MZOP KAM26-066-1EC-PR-8	KPC198LZOP KEL16-049-2EC-PR-8	3218
8x22x7	KF7-822-C10-F12	7'9x21'2"	KPC48MOP KAM16-052-1EC-PR-8	KPC248LZOP KEL26-066-2EC-PR-8	3335
8x22x7	KF7-822-C12-F10	7'9x21'2"	KPC68MZOP KAM26-073-1EC-PR-8	KPC248LZOP KEL26-066-2EC-PR-8	3335
8x24x7	KF7-824-C12-F12	7'9x23'1"	KPC68MZOP KAM26-073-1EC-PR-8	KPC248LZOP KEL26-066-2EC-PR-8	3524
10x16x7	KF7-1016-C8-F8	9'8"x15'5"	KPC48MOP KAM16-052-1EC-PR-8	KPC248LZOP KEL26-066-2EC-PR-8	3146
10x18x7	KF7-1018-C8-F10	9'8"x17'4"	KPC48MOP KAM16-052-1EC-PR-8	KPC248LZOP KEL26-066-2EC-PR-8	3363
10x18x7	KF7-1018-C10-F8	9'8"x17'4"	KPC68MZOP KAM26-073-1EC-PR-8	KPC248LZOP KEL26-066-2EC-PR-8	3363
10x20x7	KF7-1020-C10-F10	9'8"x19'3"	KPC68MZOP KAM26-073-1EC-PR-8	KPC248LZOP KEL26-066-2EC-PR-8	3580
12x16x7	KF7-1216-C8-F8	11'7"x15'5"	KPC48MOP KAM16-052-1EC-PR-8	KPC248LZOP KEL26-066-2EC-PR-8	3524

Combos: Coolers: 38°F & Freezers: 10°F - 8'-6-1/4" High

<u>With Floor</u>	<u>Remote</u>	<u>Actual Size</u>	<u>Cooler Refrigeration</u>	<u>Freezer Refrigeration</u>	<u>Ship Weight</u>
8x16x8	KF8-816-C8-F8	7'9x15'5"	KPC48MOP KAM16-052-1EC-PR-8	KPC248LZOP KEL26-066-2EC-PR-8	2847
8x18x8	KF8-818-C8-F10	7'9x17'4"	KPC48MOP KAM16-052-1EC-PR-8	KPC248LZOP KEL26-066-2EC-PR-8	2964
8x18x8	KF8-818-C10-F8	7'9x17'4"	KPC68MZOP KAM26-066-1EC-PR-8	KPC248LZOP KEL26-066-2EC-PR-8	3029
8x20x8	KF8-820-C8-F12	7'9x19'3"	KPC48MOP KAM16-052-1EC-PR-8	KPC248LZOP KEL26-066-2EC-PR-8	3153
8x20x8	KF8-820-C10-F10	7'9x19'3"	KPC68MZOP KAM26-066-1EC-PR-8	KPC248LZOP KEL26-066-2EC-PR-8	3153
8x20x8	KF8-820-C12-F8	7'9x19'3"	KPC68MZOP KAM26-066-1EC-PR-8	KPC248LZOP KEL26-066-2EC-PR-8	3218
8x22x8	KF8-822-C10-F12	7'9x21'2"	KPC68MZOP KAM26-066-1EC-PR-8	KPC248LZOP KEL26-066-2EC-PR-8	3335
8x22x8	KF8-822-C12-F10	7'9x21'2"	KPC68MZOP KAM26-066-1EC-PR-8	KPC248LZOP KEL26-066-2EC-PR-8	3335
8x24x8	KF8-824-C12-F12	7'9x23'1"	KPC68MZOP KAM26-066-1EC-PR-8	KPC248LZOP KEL26-066-2EC-PR-8	3524
10x16x8	KF8-1016-C8-F8	9'8"x15'5"	KPC68MZOP KAM26-073-1EC-PR-8	KPC248LZOP KEL26-066-2EC-PR-8	3146
10x18x8	KF8-1018-C8-F10	9'8"x17'4"	KPC68MZOP KAM26-073-1EC-PR-8	KPC248LZOP KEL26-066-2EC-PR-8	3363
10x18x8	KF8-1018-C10-F8	9'8"x17'4"	KPC68MZOP KAM26-073-1EC-PR-8	KPC248LZOP KEL26-066-2EC-PR-8	3363
10x20x8	KF8-1020-C10-F10	9'8"x19'3"	KPC68MZOP KAM26-073-1EC-PR-8	KPC248LZOP KEL26-066-2EC-PR-8	3580
10x22x8	KF8-1022-C12-F10	9'8"x21'2"	KPC68MZOP KAM26-073-1EC-PR-8	KPC248LZOP KEL26-066-2EC-PR-8	3830
10x22x8	KF8-1022-C14-F8	9'8"x21'2"	KPC98MZOP KAM26-094-1EC-PR-8	KPC248LZOP KEL26-066-2EC-PR-8	3830
10x24x8	KF8-1024-C14-F10	9'8"x23'1"	KPC98MZOP KAM26-094-1EC-PR-8	KPC248LZOP KEL26-066-2EC-PR-8	4115
12x16x8	KF8-1216-C8-F8	11'7"x15'5"	KPC68MZOP KAM26-066-1EC-PR-8	KPC248LZOP KEL26-066-2EC-PR-8	3524
12x18x8	KF8-1218-C10-F8	11'7"x17'4"	KPC68MZOP KAM26-073-1EC-PR-8	KPC248LZOP KEL26-066-2EC-PR-8	3802
12x20x8	KF8-1220-C12-F8	11'7"x19'3"	KPC98MZOP KAM26-094-1EC-PR-8	KPC248LZOP KEL26-066-2EC-PR-8	4087
12x22x8	KF8-1222-C14-F8	11'7"x21'2"	KPC98MZOP KAM26-094-1EC-PR-8	KPC248LZOP KEL26-066-2EC-PR-8	4412