

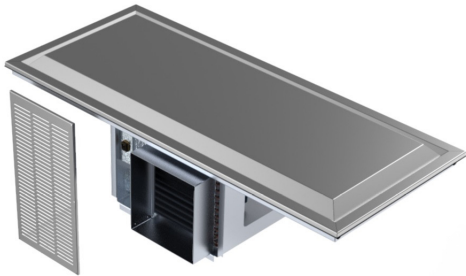
# N8200P

Drop-In Self-Contained Frost Top

Project \_\_\_\_\_  
 Item \_\_\_\_\_  
 Quantity \_\_\_\_\_  
 CSI Section 11400  
 Approved \_\_\_\_\_  
 Date \_\_\_\_\_

## Models

- N8231P 31" length self-contained frost top
- N8245P 45" length self-contained frost top
- N8259P 59" length self-contained frost top
- N8273P 73" length self-contained frost top
- N8287P 87" length self-contained frost top



N8259P

## Standard Features

- Polyurethane foam insulation
- On/off switch
- Raised stainless steel top with full perimeter drain trough and 1/2" drain
- Environmentally friendly R290 refrigerant
- Stainless steel louver provided
- Push-in perimeter gasket
- One year parts and labor standard warranty

## Options & Accessories

- Single or double service flip-up sneezeguards
  - Relocate compressor
  - 220V/50 cycle electrical available in 404a custom sku# version
- \* Inclusion of this option will alter electrical specifications of the unit

## Specifications

Top is one-piece, heavy-gauge stainless steel. Top has a drain trough and 2.00" (5cm) overhang around perimeter. Top is elevated 1.68" (4cm) above counter surface. Refrigeration lines are secured to the underside of the top and insulated with high-density, environmentally friendly, Kyoto Protocol Compliant, Non ODP (Ozone Depletion Potential), Non GWP (Global Warming Potential) closed-cell polyurethane. Exterior housing is heavy-gauge galvanized steel.

Condensing unit is suspended below the frost top on a heavy-gauge steel frame. Condensing unit uses R290 refrigerant. Unit has an ON/OFF toggle switch, an 8' (2.4m) cord and NEMA 5-15 plug. Unit has (1) stainless steel louver provided for field installation; cutout dimensions are 12.00" x 23.50" (30cm x 60cm).



N8200P: Drop-In Self-Contained Frost Top

**Plan View  
N8200P Models**

**Elevation View  
N8200P Models**

**Right End View  
N8200P Models**

| Specifications |                                   |                               |          |      |      |              |             |                    |              |
|----------------|-----------------------------------|-------------------------------|----------|------|------|--------------|-------------|--------------------|--------------|
| Model          | Counter Cutout<br>2Dimensions     | "Display Area<br>(Raised Top) | V/Hz/Ph  | Amps | H.P. | Nema<br>Plug | BTU<br>Load | System<br>Capacity | Ship Weight  |
| N8231P         | 30.75" x 25.00"<br>(78cm x 64cm)  | 23" x 18"                     | 115/60/1 | 2.4  | 1/5  | 5-15P        | 635         | 635                | 142lbs/64kg  |
| N8245P         | 44.63" x 25.00"<br>(113cm x 64cm) | 37" x 18"                     | 115/60/1 | 2.4  | 1/5  | 5-15P        | 878         | 878                | 168lbs/76kg  |
| N8259P         | 58.50" x 25.00"<br>(149cm x 64cm) | 51" x 18"                     | 115/60/1 | 3.7  | 1/4  | 5-15P        | 1237        | 1237               | 193lbs/88kg  |
| N8273P         | 72.38" x 25.00"<br>(184cm x 64cm) | 65" x 18"                     | 115/60/1 | 3.7  | 1/4  | 5-15P        | 1437        | 1437               | 209lbs/95kg  |
| N8287P         | 86.25" x 25.00"<br>(219cm x 64cm) | 79" x 18"                     | 115/60/1 | 4.8  | 1/3  | 5-15P        | 1803        | 1803               | 239lbs/108kg |

Delfield reserves the right to make changes to the design or specifications without prior notice.