

N8200-STP

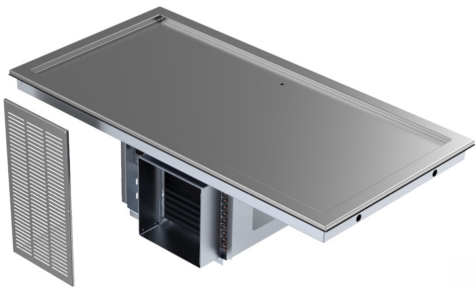
Drop-In Self-Contained Sheet Pan Frost Top

Project _____
 Item _____
 Quantity _____
 CSI Section 11400
 Approved _____
 Date _____

N8200-STP: Drop-In Self-Contained Frost Top

Models

- N8230-STP 30" length self-contained frost top - holds 1 sheet pan
- N8240-STP 40" length self-contained frost top - holds 2 sheet pans (tall left to right)
- N8256-STP 56" length self-contained frost top - holds 2 sheet pans (long left to right)
- N8258-STP 58" length self-contained frost top - holds 3 sheet pans (tall left to right)
- N8275-STP 75" length self-contained frost top - holds 4 sheet pans (tall left to right)



N8258-STP

Standard Features

- Polyurethane foam insulation
- On/off switch
- Environmentally friendly R290 refrigerant
- 1/2" drain connection
- Stainless steel louver provided
- Push-in perimeter gasket

Options & Accessories

- Single or double service flip-up sneezeguards
- Relocate compressor
- 220V/50 cycle electrical available in 404a custom sku# version
- Remote toggle switch assembly (shipped loose) (AS000-473-003W)
- * Inclusion of this option will alter electrical specifications of the unit

Specifications

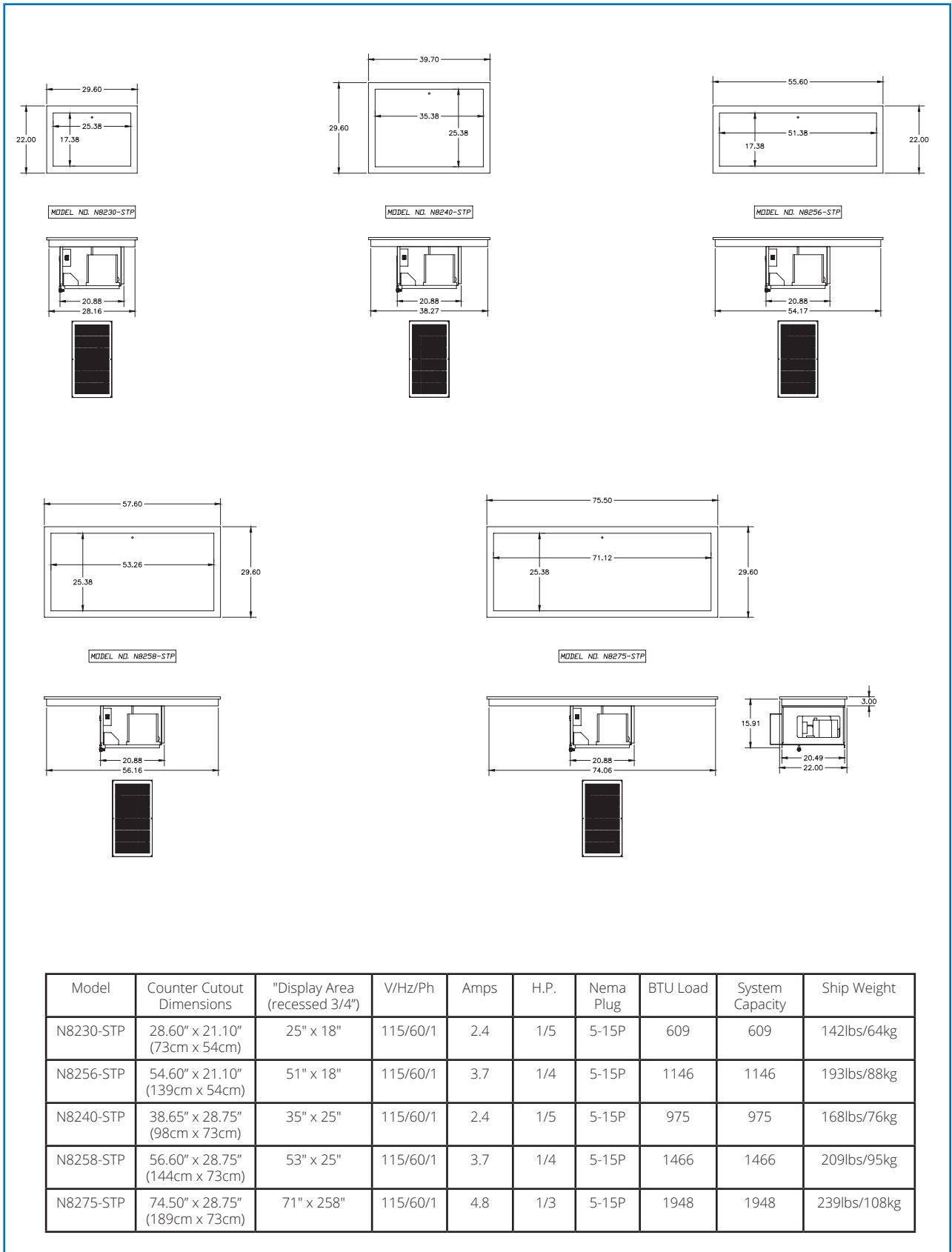
Top is one-piece, heavy-gauge stainless steel. Top is recessed .75" (1.9cm) above counter surface. Refrigeration lines are secured to the underside of the top and insulated with high-density, environmentally friendly, Kyoto Protocol Compliant, Non ODP (Ozone Depletion Potential), Non GWP (Global Warming Potential) closed-cell polyurethane. Exterior housing is heavy-gauge galvanized steel.

Condensing unit is suspended below the frost top on a heavy-gauge steel frame. Condensing unit uses R290 refrigerant. Unit has an ON/OFF toggle switch, an 8' (2.4m) cord and NEMA 5-15 plug. Unit has (1) stainless steel louver provided for field installation; cutout dimensions are 12.00" x 23.50" (30cm x 60cm).



N8200-STP

Drop-In Self-Contained Sheet Pan Frost Top



Model	Counter Cutout Dimensions	"Display Area (recessed 3/4")	V/Hz/Ph	Amps	H.P.	Nema Plug	BTU Load	System Capacity	Ship Weight
N8230-STP	28.60" x 21.10" (73cm x 54cm)	25" x 18"	115/60/1	2.4	1/5	5-15P	609	609	142lbs/64kg
N8256-STP	54.60" x 21.10" (139cm x 54cm)	51" x 18"	115/60/1	3.7	1/4	5-15P	1146	1146	193lbs/88kg
N8240-STP	38.65" x 28.75" (98cm x 73cm)	35" x 25"	115/60/1	2.4	1/5	5-15P	975	975	168lbs/76kg
N8258-STP	56.60" x 28.75" (144cm x 73cm)	53" x 25"	115/60/1	3.7	1/4	5-15P	1466	1466	209lbs/95kg
N8275-STP	74.50" x 28.75" (189cm x 73cm)	71" x 25"	115/60/1	4.8	1/3	5-15P	1948	1948	239lbs/108kg

Welbilt reserves the right to make changes to the design or specifications without prior notice.