

PROJECT:	
MODEL #:	
ITEM #:	QTY:
AVAILABLE W/H:	APPROVAL:

Two Compartment Sinks



BS2-18-12/2D



BS2-18-12/L



BS2-18-12/N



BS2-18-12/R

STANDARD FEATURES

- Entire ASSEMBLY is fused Welded, shielded and polished to create a one piece seamless sink Unit
- Welded areas are high-speed belt blended to match adjacent surfaces with the continuity of a satin finish
- Swirl away bowl drainage
- Adjustable ABS bullet feet
- All sink compartments are covered With a full 5/8" radius
- Stainless Steel cross braced legs and gussets for additional strength and stability
- All Sink Models Equipped with standard strainers with Brass Fittings instead of Aluminum
- Die-stamped creased drain boards for positive drainage



Conforms to NSF/ANSI 2

WARRANTY

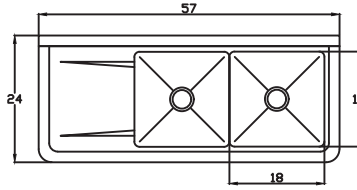
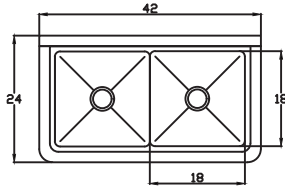
APPROVALS:

AVAILABLE AT:

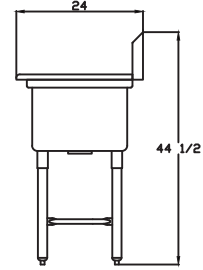
Two Compartment Sinks

PRODUCT PLAN VIEW

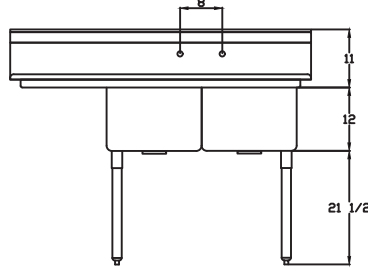
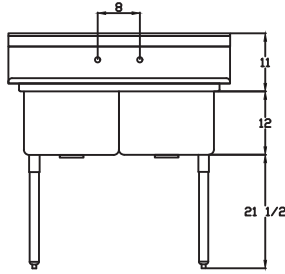
- Top View -



- Side View -



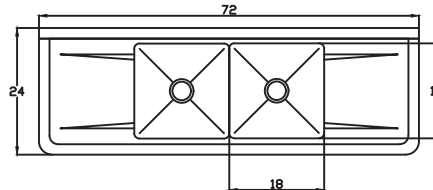
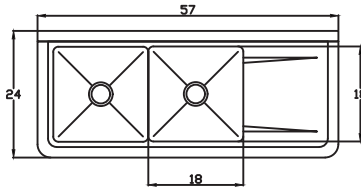
- Front View -



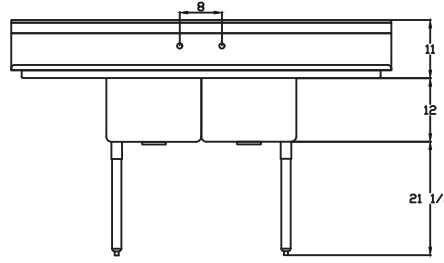
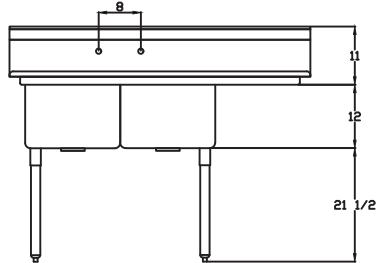
BS2-18-12/N

BS2-18-12/L

- Top View -



- Front View -



BS2-18-12/R

BS2-18-12/2D

PRODUCT SPECIFICATION

Two Compartment Sinks

Model	Description	Overall Size (inches / mm)			Bowl Size (inches / mm)			Net Weight (lbs/kg)	Ship Weight (lbs/kg)
		L	D	H	L	D	H		
BS2-18-12/N	2 Compartment No Drain Board	42"(1067mm)	24"(610mm)	44 1/2"(1130mm)	18"(458mm)	18"(458mm)	12"(305mm)	47(21)	51(23)
BS2-18-12/L	2 Compartment 1 Left Drain Board	57"(1448mm)	24"(610mm)	44 1/2"(1130mm)	18"(458mm)	18"(458mm)	12"(305mm)	61(28)	67(30)
BS2-18-12/R	2 Compartment 1 Right Drain Board	57"(1448mm)	24"(610mm)	44 1/2"(1130mm)	18"(458mm)	18"(458mm)	12"(305mm)	61(28)	67(30)
BS2-18-12/2D	2 Compartment 2 Drain Boards	72"(1829mm)	24"(610mm)	44 1/2"(1130mm)	18"(458mm)	18"(458mm)	12"(305mm)	70(32)	77(35)

*BLUE AIR has the right to change specifications without further notice.