



Model: _____ Item #: _____ Date: _____

Project: _____ Qty: _____ Approved By: _____

Self-Contained Back Bar Refrigeration

REFRIGERATION



BS108L-KSS-LRLR shown

Following sizes available:

- 36" Single Door
- 60" Two Door
- 84" Three Door
- 108" Four Door

Standard Features

Electrical	115 V, 1 Phase, 60 Hz. Furnished with 8'-0" plug-in cord, which exits left rear of cooler. NEMA 5-15P Plug Configuration. Dedicated 15 Amp circuit recommended.				
	1 Door Model: 2.8 Full Load Amps, 1/5 HP				
	2 Door Model: 4.8 Full Load Amps, 1/4 HP				
	3 Door Model: 5.8 Full Load Amps, 1/3 HP				
	4 Door Model: 6.5 Full Load Amps, 1/3 HP				
Refrigeration	Self-contained 134A Refrigerant. 30°F-40°F operating range. Digital Thermostat on front grille. R290 Hydrocarbon refrigerant available				
Case Capacity		36"	60"	84"	108"
	Long Neck Bottles:	7.5	15.5	24	30
	12 oz. Cans:	10	20	34	40
	Wine Bottles (each):	72	162	248	288
Interior	20 gauge stainless steel with coved corners.				
	Two adjustable epoxy coated wire shelves with floor rack per door.				
	Door opening: 29-11/16" high x 19-15/16" wide				
Exterior	Sides: 20 gauge stainless steel or black vinyl				
	Front: 20 gauge stainless steel, black vinyl, or glass				
	Back: 20 gauge galvanized steel				
	Top: 20 gauge galvanized w/ option of stainless steel				
Insulation	2" thick foamed-in-place polyurethane				
Plumbing	No drain connection required. Condensate evaporator pan included.				

Optional Accessories

BS-100	Four 6" Stainless Steel Legs
BS-101	Six 6" Stainless Steel Legs (84" & 108" Models)
BS-102	Four 4" Stainless Steel Legs
BS-103	Six 4" Stainless Steel Legs (84" & 108" Models)
BS-106	Left Side Stainless Steel Kick Plate
BS-107	Right Side Stainless Steel Kick Plate
BS-136	36" Stainless Steel Front Kick Plate
BS-160	60" Stainless Steel Front Kick Plate
BS-184	84" Stainless Steel Front Kick Plate
BS-199	108" Stainless Steel Front Kick Plate
BS-130	Four 1" Ultra Low Profile Casters w/ Brakes
BS-131	Six 1" Ultra Low Profile Casters w/ Brakes (84" & 108" Models)
BS-132	Four 2" Low Profile Casters w/ Brakes
BS-133	Six 2" Low Profile Casters w/ Brakes (84" & 108" Models)
BS-134	Four 3" Casters w/ Brakes
BS-135	Six 3" Casters w/ Brakes (84" & 108" Models)

This equipment is intended for the storage and display of non-potentially hazardous bottle or canned products only.





Model: _____ Item #: _____ Date: _____

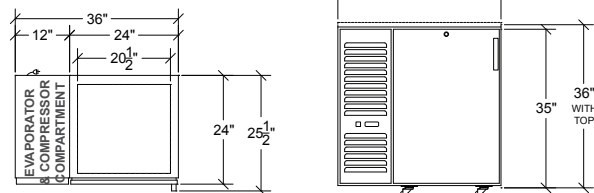
Project: _____ Qty: _____ Approved By: _____

Self-Contained Back Bar Refrigeration

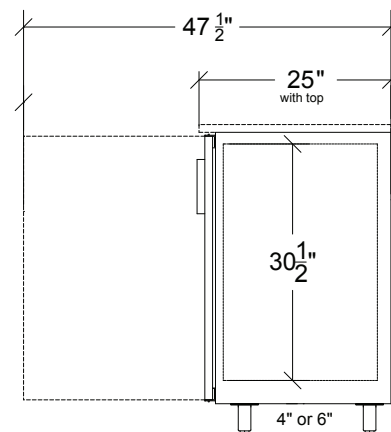
REFRIGERATION

One Door (36")

235 lbs. (250 lbs. with Top)

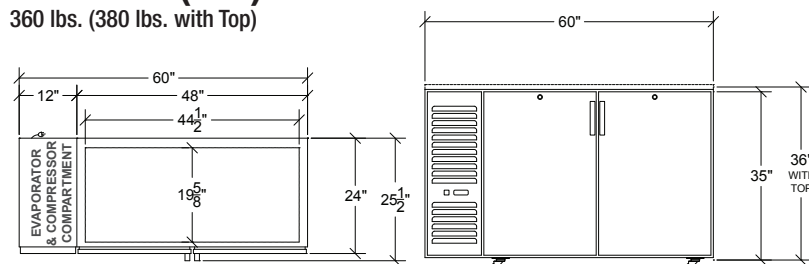


Side View - All Models



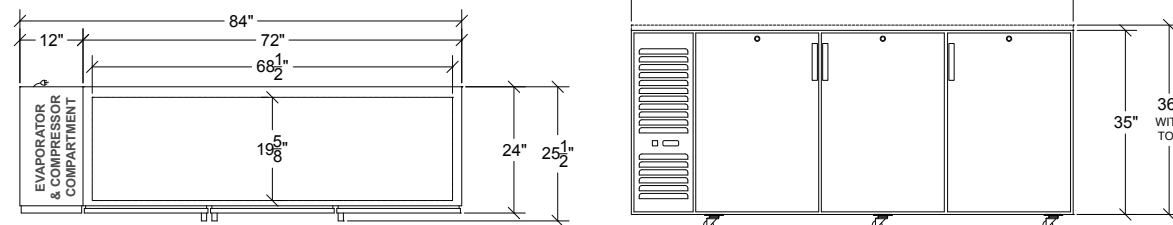
Two Door (60")

360 lbs. (380 lbs. with Top)



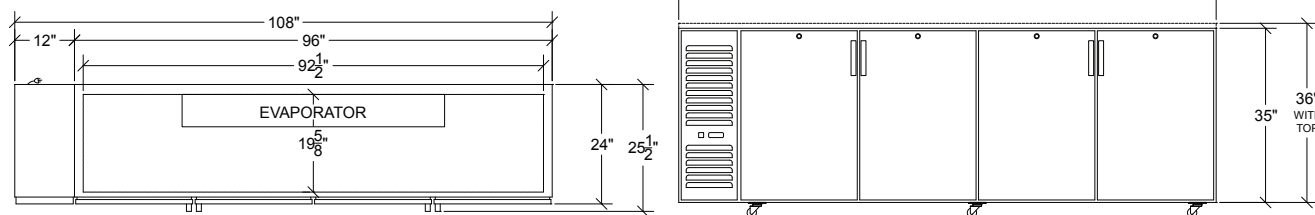
Three Door (84")

480 lbs. (505 lbs. with Top)



Four Door (108")

525 lbs. (580 lbs. with Top)



Note: Optional casters raise height 1" higher than wheel size

Note: Optional 4" or 6" legs available



CONFORMS TO UL Std 471
& NSF STD 7

Krowne Metal Corporation • 100 Haul Rd. Wayne, NJ 07470 • Toll Free: (800) 631-0442 • Fax: (973) 872-1129 • sales@krowne.com • krowne.com

Due to our commitment to continued product improvement, specifications are subject to change without notice.

Rev. 6/2019 • No. 1.3