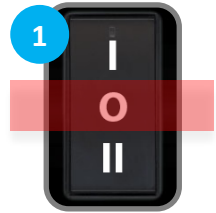


! CAUTION: NEVER use warm water or a dish washer when rinsing and cleaning the machine and its components.

DRAIN AND RINSE



1 Switch to OFF



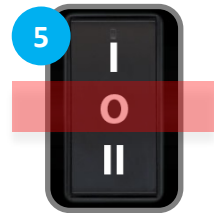
2 Remove Hopper Agitator



3 Switch to WASH



4 Drain Product



5 Switch to OFF



6 Add 2 Gallons of Water to Hopper



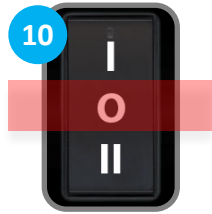
7 Scrub Sides and Bottom of Hopper



8 Switch to WASH



9 Drain Water



10 Switch to OFF

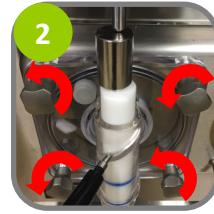


11 Repeat Steps 6-10 Until Water is Clear

DISASSEMBLE



1 Remove



2 Remove Dispensing Door Hand Screws



3 Remove Disp. Door, Torque Assembly



4 Remove Torque Assembly O-Ring



5 Remove Disp. Door Gasket



6 Remove Valve Pin and Draw Handle



7 Rotate Draw Valve



8 Remove Ice Buster



9 Rotate and Remove Draw Valve



10 Remove Draw Valve O-Rings



11 Remove Beater



12 Separate Beater Blades from Clips



13 Remove Drive Shaft from Cylinder

CLEAN



1 Scrub Cylinder



2 Scrub Hopper Sides and Bottom



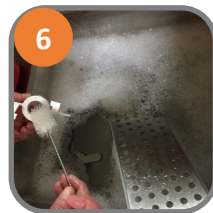
3 Scrub Hopper Feed Tube and Agitator



4 Thoroughly Clean Rear of Cylinder



5 Clean and Wipe Down Exterior



6 Wash all Metal and Plastic Parts



7 Wash Prime Plug on Dispensing Door



8 Clean O-Rings and Rubber Gaskets

ASSEMBLE



1 Install Front & Internal Drip Trays



2 Install Drive Shaft Gas-ket & Lubricate



3 Install Drive Shaft



4 Install Beater Blades into Beater Clips



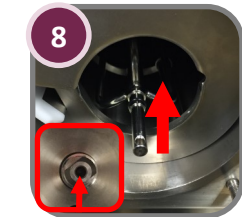
5 Assemble and Install Beater Assembly



6 Install and Lubricate Torque O-Ring



7 Install Torque Guide



8 Install Torque Assembly



9 Install Beater Guide on Door



10 Install and Lubricate Draw Valve O-Rings



11 Twist and install Draw Valve



12 Rotate Draw Valve to Install Ice Buster



13 Install Ice Buster



14 Install Draw Handle and Valve Pin



15 Install and Lubricate Door Gasket



16 Install Dispensing Door Assembly



17 Tighten Dispensing Door Hand Screws



18 Install Torque Arm



19 Lubricate and Install Hopper Agitator

SANITIZE AND ADD PRODUCT



1 Mix 2 Gallons Sanitizer Solution



2 Pour 2 gal. Sanitizer into Hopper



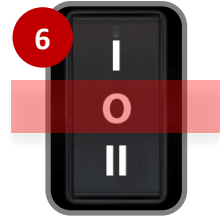
3 Switch to WASH



4 Scrub Hopper Agitator



5 After 5-10 min. Drain Sanitizer



6 Switch to OFF



7 Open Draw Valve



8 Mix and Add 1/4 Gallon Product



9 Flush Sanitizer and Close Draw Valve



10 Add minimum 2 1/2 Gallons of Product



11 Open Prime Plug and Fill Cylinder



12 Close Prime Plug Switch to FREEZE