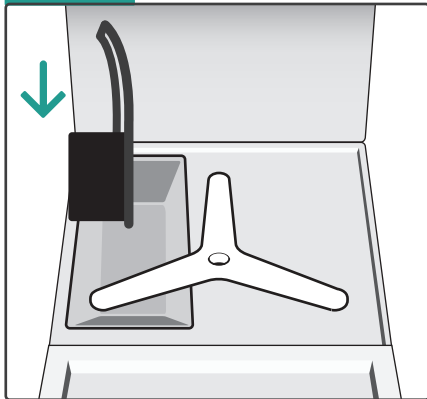


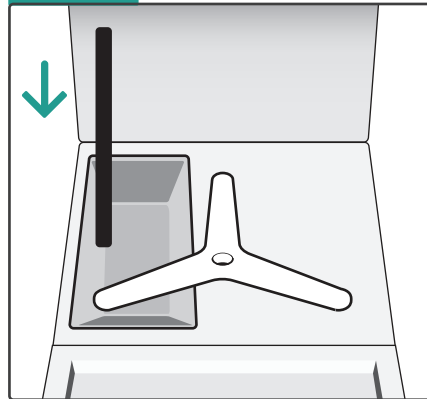
JET-TECH 777 START UP DAILY OPERATION

Step 1



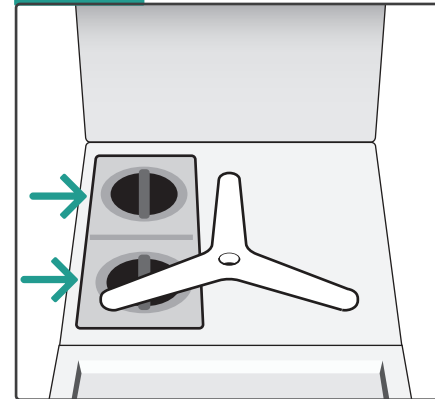
Place the pump filter into the machine.

Step 2



Place the drain tube into place.

Step 3



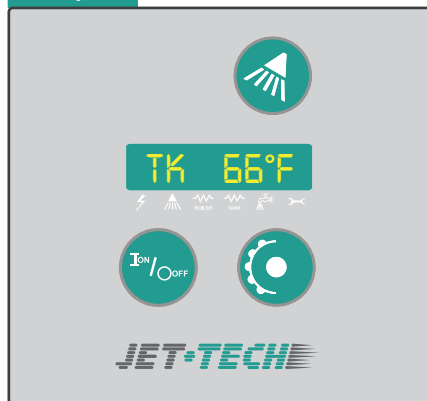
Place the filters into the machine.

Step 4




Place the stainless rack into machine.


Step 5



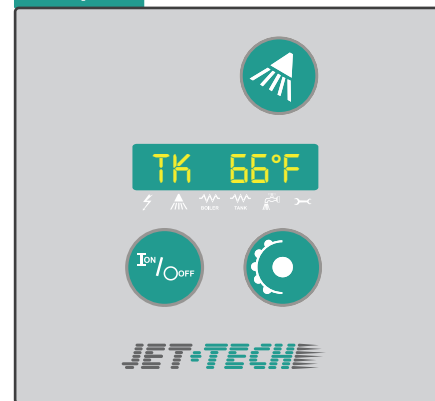
Press ON button to start the machine, it will indicate the filling cycle and water temperature.

 Cycle through wash cycle programs.

- PW1 – Short wash
- PW2 – Intermediate wash
- PW3 – Intensive wash

Close the door and then press the  button to accept your wash cycle choice and start the wash.

Step 6



After the filling and heating is complete, the shower symbol will light.

Once unit is ready, the machine will automatically wash by closing the door.

NOTE: Opening the door during the fill and heat cycle will interrupt the process. It will resume when the door is closed.



(888) 275-4538 ex. 611
WWW.MVPGROUPCORP.COM

2017 JAN 01