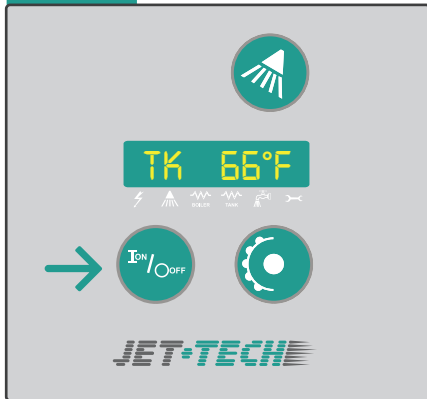


JET-TECH 777 DAILY MAINTENANCE

Step 1



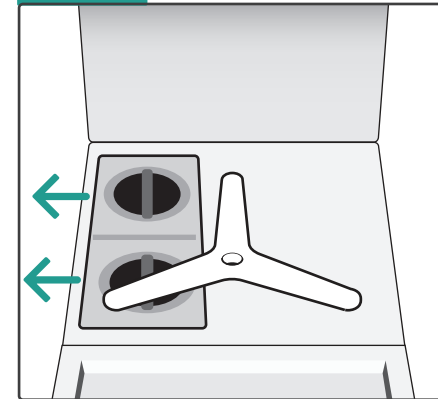
Press the OFF button.

Step 2



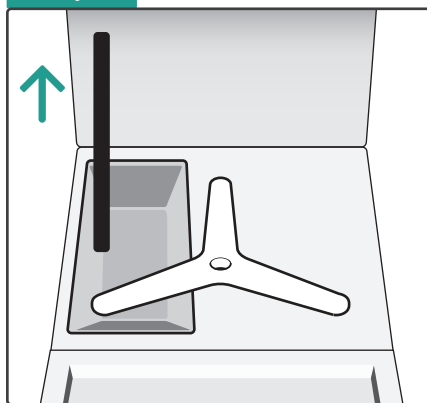
Open the door and empty the inside of the machine. Remove the stainless rack from inside the machine and set aside.

Step 3



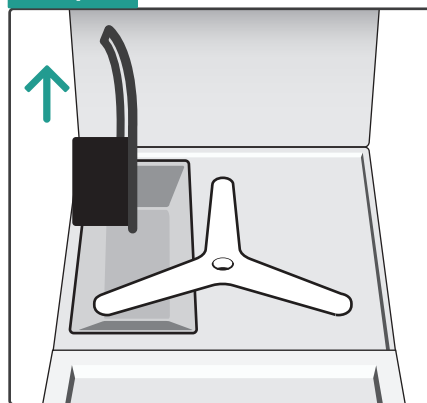
Remove and clean the filters.

Step 4



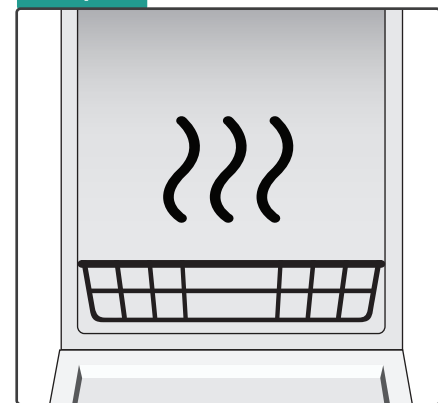
Remove and rinse the drain tube.

Step 5



Remove and clean the pump filter.

Step 6



The unit should be hosed down with clear water inside the wash tank only (not outside) to flush any food particles left.

Open the door and leave open all night to allow the inside to air dry.



Do not allow food residue to accumulate on the bottom of the tank. Always make sure that all washing and rinsing nozzles are free from lime or solid residue. Do not try to wash small items loose in the machine.

